

# CRIED NINE DEPARTURE

AL-164 (FAA)

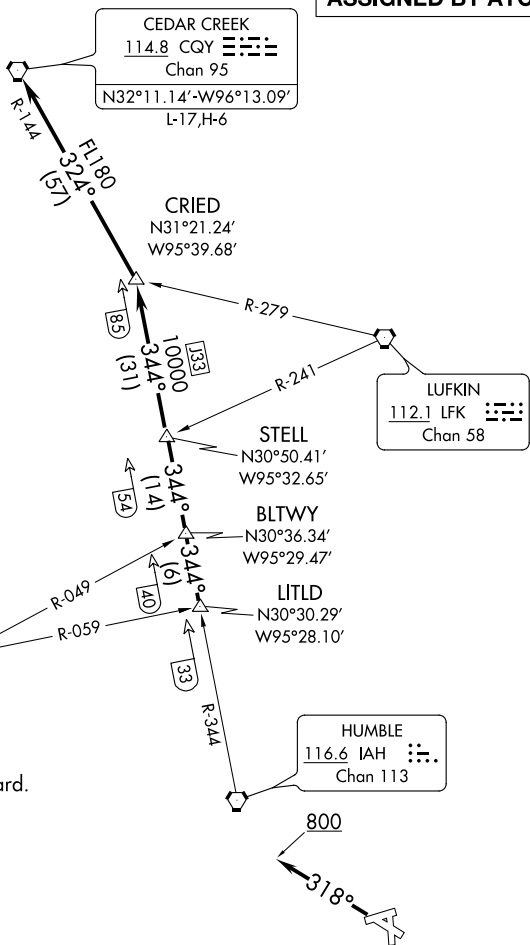
GALVESTON, TEXAS

ASOS  
 119.275  
 CLNC DEL  
 135.35 (when tower closed)  
 GND CON  
 118.625  
 GALVESTON TOWER ★  
 120.575 (CTAF)  
 HOUSTON DEP CON  
 134.45 284.0

**TOP ALTITUDE:  
 ASSIGNED BY ATC**

NOTE: RADAR required.

TAKEOFF MINIMUMS  
 Rwy's 14, 18, 32, 36: Standard.



NAVASOTA  
 115.9 TNV  
 Chan 106

CEDAR CREEK  
 114.8 CQY  
 Chan 95  
 N32°11.14'-W96°13.09'  
 L-17,H-6

LUFKIN  
 112.1 LFK  
 Chan 58

HUMBLE  
 116.6 IAH  
 Chan 113

NOTE: Chart not to scale.

## DEPARTURE ROUTE DESCRIPTION

TAKEOFF RWYS 14, 18, 36: When entering controlled airspace, climb on assigned heading for RADAR vectors to LITLD INT. Maintain ATC assigned altitude. Expect filed altitude 10 minutes after departure, thence. . . .

TAKEOFF RWY 32: Climb heading 318° to 800 before turning. When entering controlled airspace, climb on assigned heading for RADAR vectors to LITLD INT. Maintain ATC assigned altitude. Expect filed altitude 10 minutes after departure, thence. . . .

. . . . on IAH R-344 to STELL INT, then on IAH R-344 to CRIED INT then left turn on CQY R-144 to CQY VORTAC.

# CRIED NINE DEPARTURE