

# EL DORADO NINE DEPARTURE

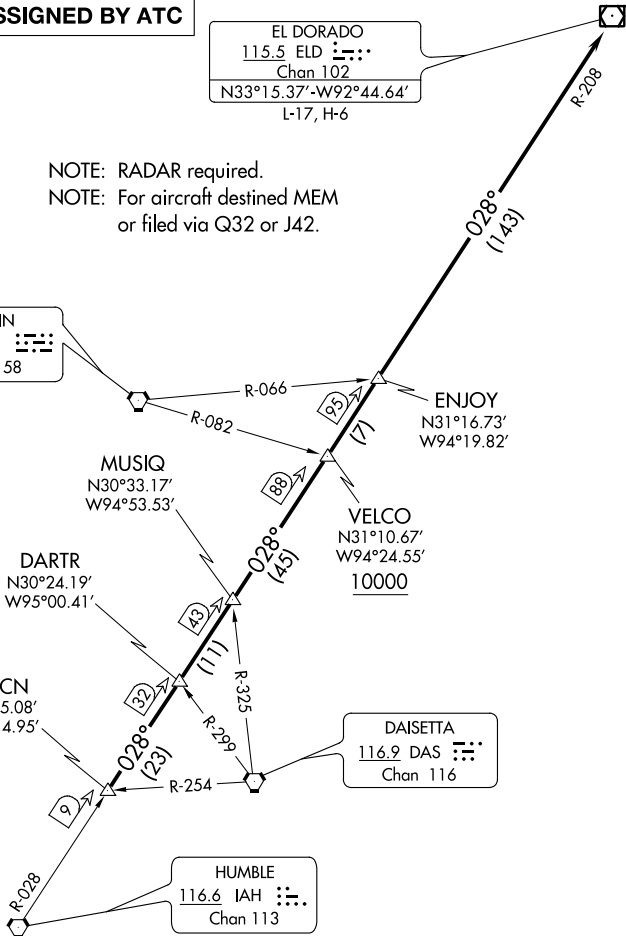
ASOS  
 119.275  
 CLNC DEL  
 135.35 (when tower closed)  
 GND CON  
 118.625  
 GALVESTON TOWER ★  
 120.575  
 HOUSTON DEP CON  
 134.45 284.0  
 CTAF  
 120.575

**TOP ALTITUDE:  
 ASSIGNED BY ATC**

EL DORADO  
 115.5 ELD   
 Chan 102  
 N33°15.37'-W92°44.64'  
 L-17, H-6

NOTE: RADAR required.  
 NOTE: For aircraft destined MEM  
 or filed via Q32 or J42.

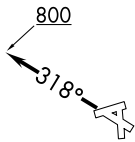
LUFKIN  
 112.1 LFK   
 Chan 58



DAISETTA  
 116.9 DAS   
 Chan 116

HUMBLE  
 116.6 IAH   
 Chan 113

TAKEOFF MINIMUMS  
 Rwy's 14, 18, 32, 36: Standard.



NOTE: Chart not to scale.

(NARRATIVE ON FOLLOWING PAGE)

SC-5, 15 AUG 2019 to 12 SEP 2019

SC-5, 15 AUG 2019 to 12 SEP 2019