

# HOODO SIX DEPARTURE (RNAV)

SC-5, 15 AUG 2019 to 12 SEP 2019

ASOS  
119.275  
CLNC DEL  
135.35 (When tower closed)  
GND CON  
118.625  
GALVESTON TOWER\*  
120.575 (CTAF)  
HOUSTON DEP CON  
134.45 284.0

NOTE: RNAV 1.

NOTE: RADAR required.

NOTE: ATC assigned only.

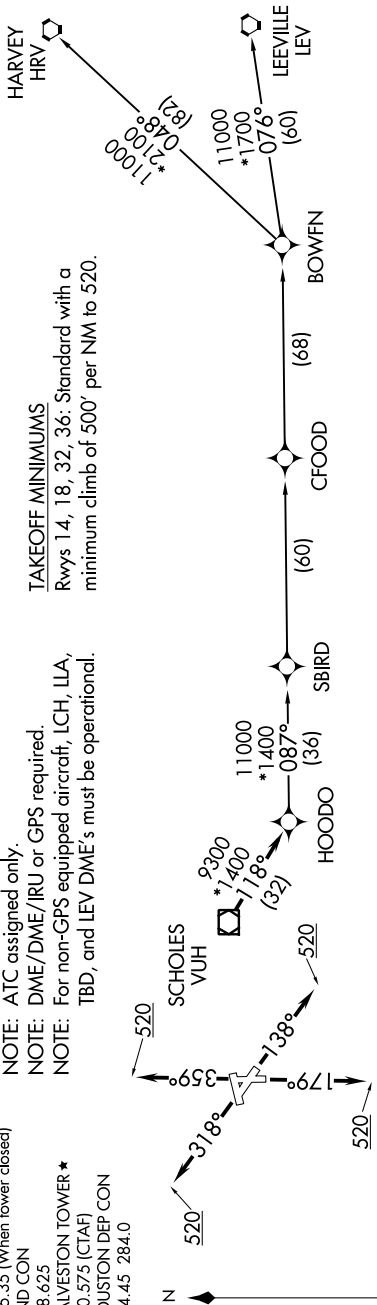
NOTE: DME/DME/IRU or GPS required.

NOTE: For non-GPS equipped aircraft, LCH, ILA, TBD, and LEV DME's must be operational.

### TAKEOFF MINIMUMS

Rwys 14, 18, 32, 36: Standard with a minimum climb of 500' per NM to 520.

### TOP ALTITUDE: ASSIGNED BY ATC



NOTE: Chart not to scale.

### DEPARTURE ROUTE DESCRIPTION

- TAKEOFF RUNWAY 14: Climb heading 138° to 520, for RADAR vectors to VUH VOR/DME, thence . . . .
- TAKEOFF RUNWAY 18: Climb heading 179° to 520, for RADAR vectors to VUH VOR/DME, thence . . . .
- TAKEOFF RUNWAY 32: Climb heading 318° to 520, for RADAR vectors to VUH VOR/DME, thence . . . .
- TAKEOFF RUNWAY 36: Climb heading 359° to 520, for RADAR vectors to VUH VOR/DME, thence . . . .

. . . . on track 118° to HOODO, then on (transition). Maintain ATC assigned altitude.  
Expect filed altitude 10 minutes after departure.

- BOWFN TRANSITION (HOODO6.BOWFN)
- CFOOD TRANSITION (HOODO6.CFOOD)
- HARVEY TRANSITION (HOODO6.HRV)
- LEEVILLE TRANSITION (HOODO6.LEV)
- SBIRD TRANSITION (HOODO6.SBIRD)

SC-5, 15 AUG 2019 to 12 SEP 2019