

LOC I-GLS	APP CRS	Rwy ldg	6000
111.7	138°	TDZE	5
		Apt Elev	6

ILS or LOC RWY 14

SCHOLES INTL AT GALVESTON (GLS)

DME required.

RADAR required for procedure entry at UCENU.

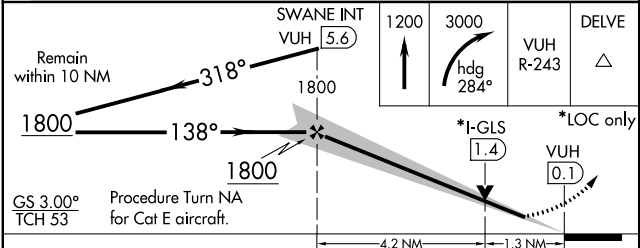
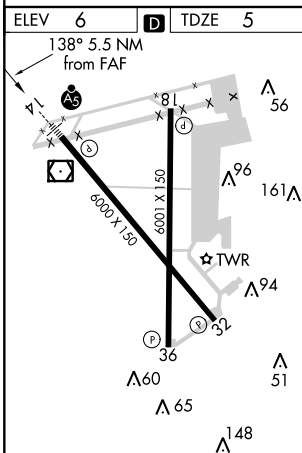
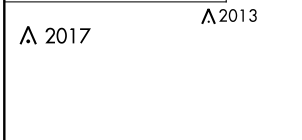
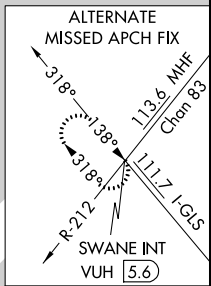
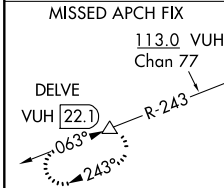
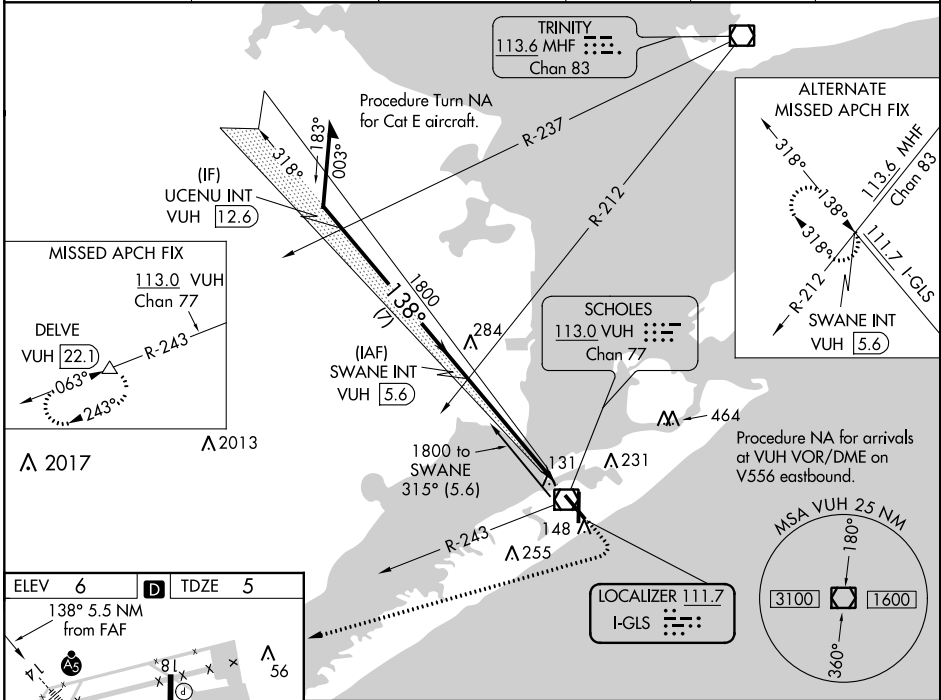
NA Circling NA east of Rwy 18 and northeast of Rwy 32. DME from VUH VOR/DME. Simultaneous reception of I-GLS and VUH DME required. For inop ALS, increase S-ILS 14 Cat E visibility to 3/4 SM and S-LOC 14 Cat E visibility to 1 3/8 SM.

MALSR



MISSED APPROACH: Climb to 1200 then climbing right turn to 3000 on heading 284° and VUH VOR/DME R-243 to DELVE/ 22.1 DME and hold.

ASOS 119.275	HOUSTON APP CON 134.45 284.0	GALVESTON TOWER * 120.575 (CTAF) 0	GND CON 118.625	CLNC DEL 135.35 (When tower dosed)	UNICOM 123.05
------------------------	--	--	---------------------------	---	-------------------------



CATEGORY	A	B	C	D	E
S-ILS 14	205-1/2 200 (200-1/2)				
S-LOC 14	460-1/2	455 (500-1/2)	460-7/8	455 (500-7/8)	
CIRCLING	500-1	494 (500-1)	500-1 1/2 494 (500-1 1/2)	560-2 554 (600-2)	620-2 1/4 614 (700-2 1/4)

SC-5, 15 AUG 2019 to 12 SEP 2019

SC-5, 15 AUG 2019 to 12 SEP 2019