

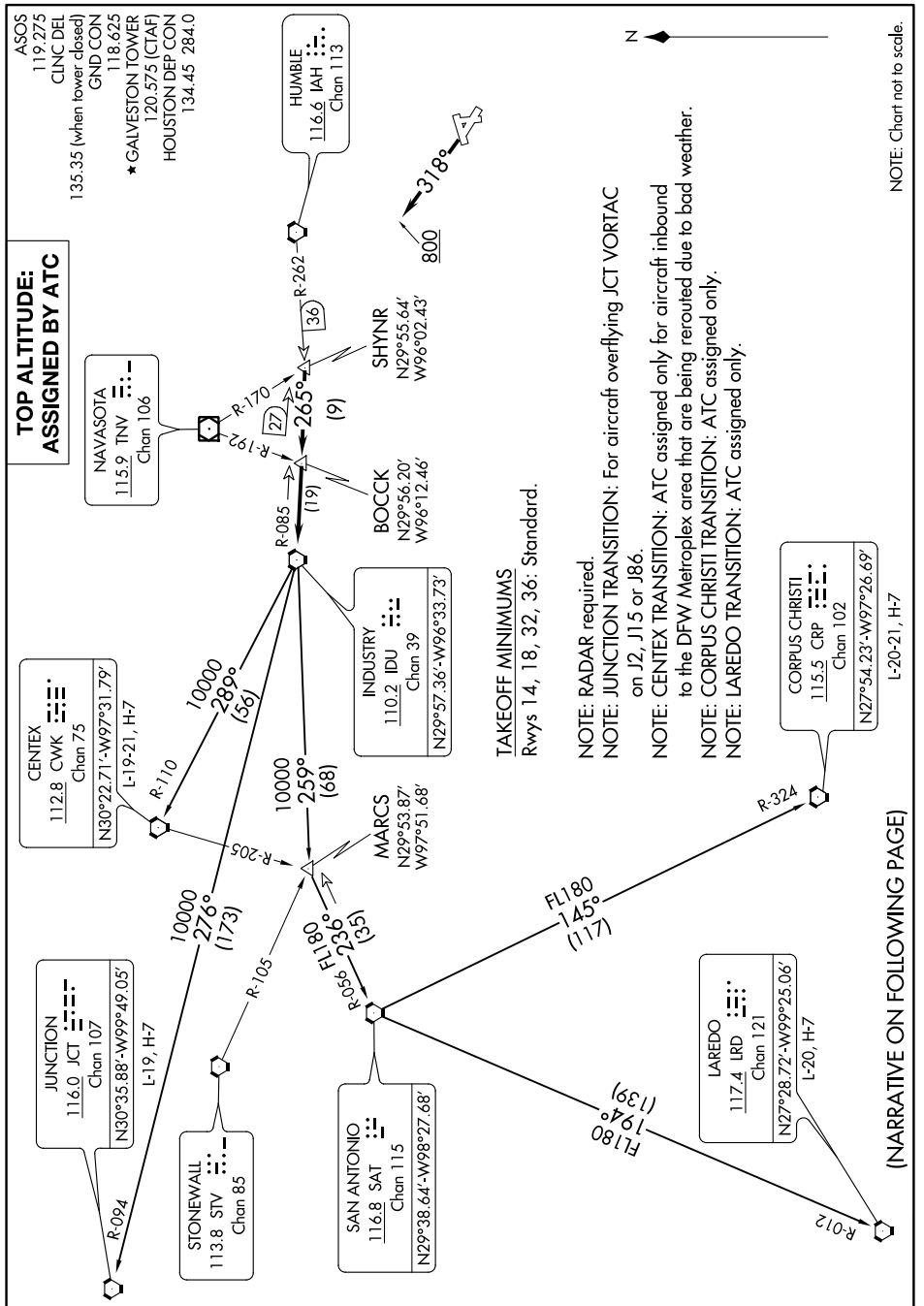
INDUSTRY NINE DEPARTURE

AL-164 (FAA)

SCHOLES INTL AT GALVESTON (GLS)

GALVESTON, TEXAS

SC-5, 15 AUG 2019 to 12 SEP 2019



TAKEOFF MINIMUMS
Rwys 14, 18, 32, 36: Standard.

NOTE: RADAR required.
 NOTE: JUNCTION TRANSITION: For aircraft overflying JCT VORTAC on J2, J15 or J86.
 NOTE: CENTEX TRANSITION: ATC assigned only for aircraft inbound to the DFW Metroplex area that are being rerouted due to bad weather.
 NOTE: CORPUS CHRISTI TRANSITION: ATC assigned only.
 NOTE: LAREDO TRANSITION: ATC assigned only.

(NARRATIVE ON FOLLOWING PAGE)

SC-5, 15 AUG 2019 to 12 SEP 2019

INDUSTRY NINE DEPARTURE

GALVESTON, TEXAS

SCHOLES INTL AT GALVESTON (GLS)