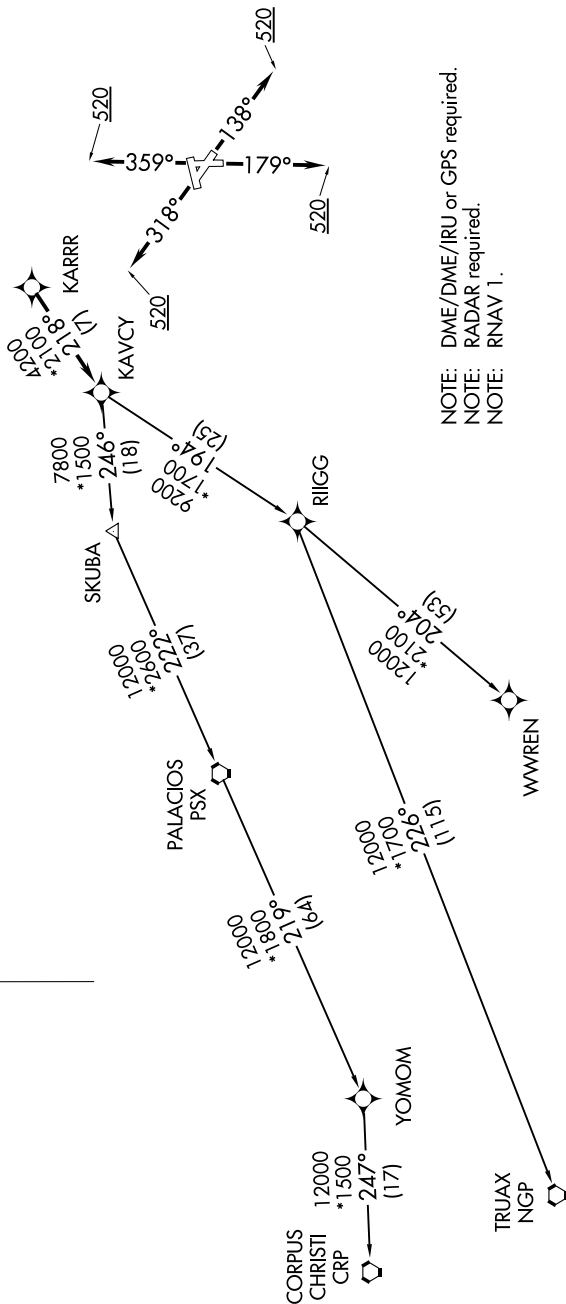


TOP ALTITUDE:
ASSIGNED BY ATC

ASOS 119.275
CLNC DEL 135.35 (when tower closed)
GND CON 118.625
GALVESTON TOWER * 120.575 (CTAF)
HOUSTON DEP CON 134.45 284.0

TAKEOFF MINIMUMS:

Rwy 14, 18, 32, 36: Standard with minimum climb of 500' per NM to 520.



NOTE: DME/DME/IRU or GPS required.
NOTE: RADAR required.
NOTE: RNAV 1.

(NARRATIVE ON FOLLOWING PAGE)

NOTE: Chart not to scale.