

(LURIC7.LURIC) 19115

AL-164 (FAA)

SCHOLES INTL AT GALVESTON (GLS)

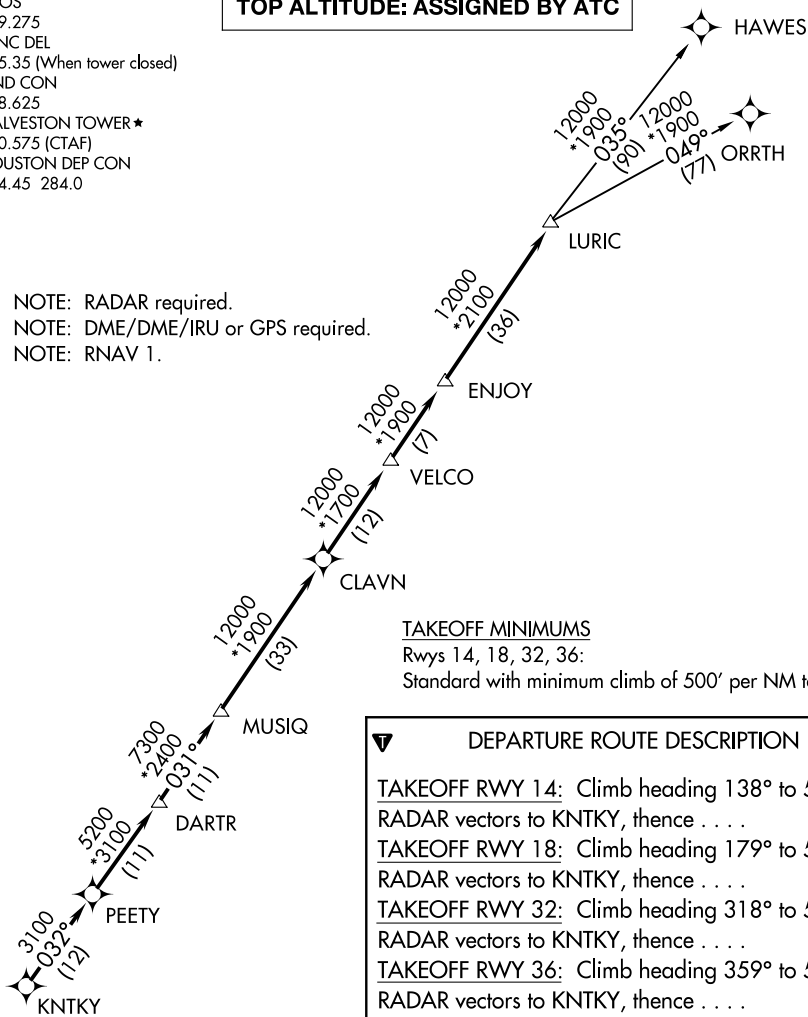
LURIC SEVEN DEPARTURE (RNAV)

GALVESTON, TEXAS

ASOS
 119.275
 CLNC DEL
 135.35 (When tower closed)
 GND CON
 118.625
 GALVESTON TOWER ★
 120.575 (CTAF)
 HOUSTON DEP CON
 134.45 284.0

TOP ALTITUDE: ASSIGNED BY ATC

NOTE: RADAR required.
 NOTE: DME/DME/IRU or GPS required.
 NOTE: RNAV 1.



TAKEOFF MINIMUMS

Rwys 14, 18, 32, 36:

Standard with minimum climb of 500' per NM to 520.

DEPARTURE ROUTE DESCRIPTION

TAKEOFF RWY 14: Climb heading 138° to 520 for RADAR vectors to KNTKY, thence . . .

TAKEOFF RWY 18: Climb heading 179° to 520 for RADAR vectors to KNTKY, thence . . .

TAKEOFF RWY 32: Climb heading 318° to 520 for RADAR vectors to KNTKY, thence . . .

TAKEOFF RWY 36: Climb heading 359° to 520 for RADAR vectors to KNTKY, thence . . .

. . . on track 032° to PEETY, then on track 032° to DARTR, then on track 031° to MUSIQ, then on track 031° to CLAVN, then on track 031° to VELCO, then on track 031° to ENJOY, then on track 031° to LURIC, then on (transition). Maintain ATC assigned altitude. Expect filed altitude 10 minutes after departure.

HAWES TRANSITION (LURIC7.HAWES)

ORRTH TRANSITION (LURIC7.ORRTH)

NOTE: Chart not to scale.

LURIC SEVEN DEPARTURE (RNAV)

(LURIC7.LURIC) 25APR19

GALVESTON, TEXAS

SCHOLES INTL AT GALVESTON (GLS)

SC-5, 15 AUG 2019 to 12 SEP 2019

SC-5, 15 AUG 2019 to 12 SEP 2019