

WAAS CH 48831 W36A	APP CRS 359°	Rwy Idg TDZE Apt Elev	6001 5 6
--	------------------------	-----------------------------	-------------------------------------

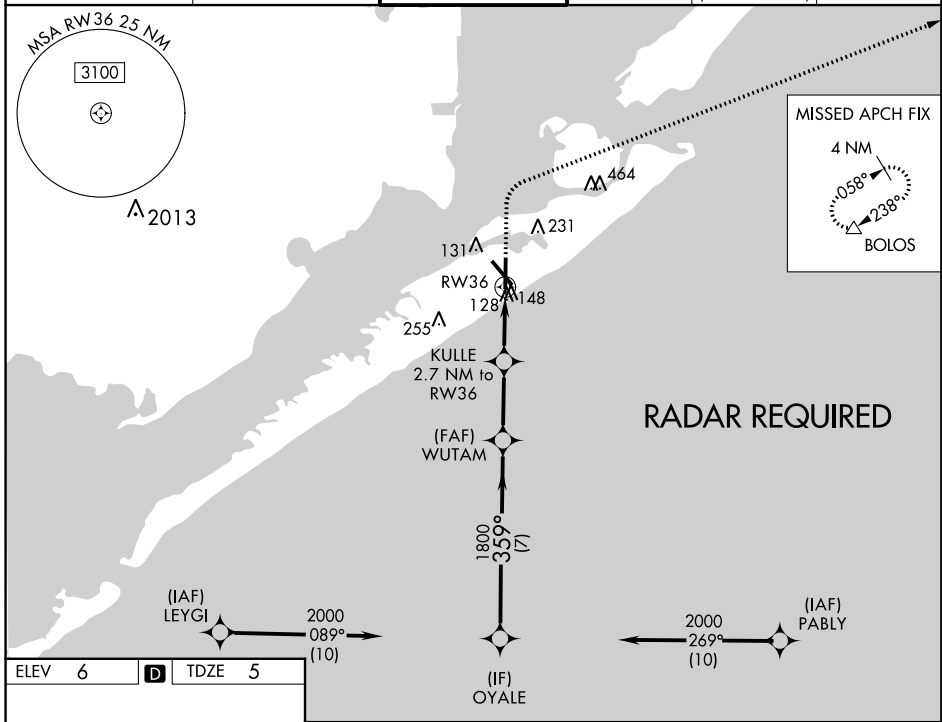
RNAV (GPS) RWY 36

SCHOLES INTL AT GALVESTON (GLS)

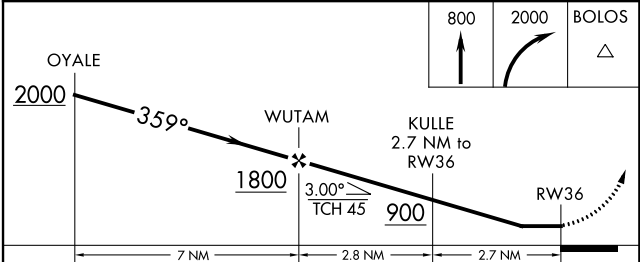
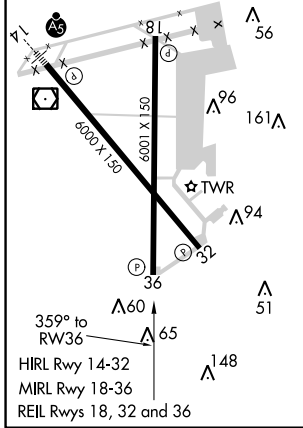
⚠ When VGSI inop, Straight-in/Circling Rwy 36 procedure NA at night. Circling NA east of Rwy 18 and northeast of Rwy 32. DME/DME RNP-0.3 NA. Helicopter visibility reduction below 1 SM NA. When local altimeter setting not received, use William P Hobby altimeter setting and increase all MDA 80 feet. Increase LP Cat C/D/E visibility to 1½ mile, LNAV Cat C/D/E visibility to 1½ mile, and Circling Cat E visibility to 2½ mile.

⚠ MISSED APPROACH: Climb to 800 then climbing right turn to 2000 direct BOLOS and hold.

ASOS 119.275	HOUSTON APP CON 134.45 284.0	GALVESTON TOWER * 120.575 (CTAF) 0	GND CON 118.625	CLNC DEL 135.35 (When tower dosed)	UNICOM 123.05
------------------------	--	---	---------------------------	---	-------------------------



ELEV 6	D	TDZE 5
--------	----------	--------



		A	B	C	D	E
LP	MDA	440-1	435 (500-1)	440-1¼	435 (500-1¼)	
LNAV	MDA	460-1	455 (500-1)	460-1⅜	455 (500-1⅜)	
CIRCLING		500-1	494 (500-1)	500-1½	560-2	620-2¼
				494 (500-1½)	554 (600-2)	614 (700-2¼)

SC-5, 15 AUG 2019 to 12 SEP 2019

SC-5, 15 AUG 2019 to 12 SEP 2019