

STRYA SEVEN DEPARTURE (RNAV)

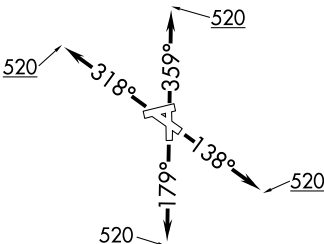
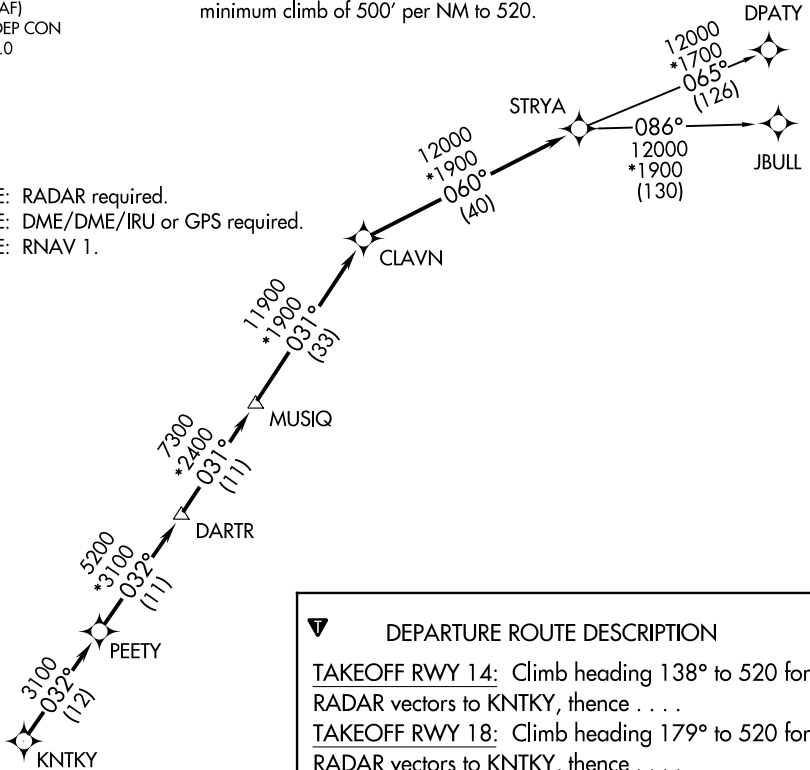
TOP ALTITUDE: ASSIGNED BY ATC

ASOS
119.275
CLNC DEL
135.35 (When tower closed)
GND CON
118.625
GALVESTON TOWER ★
120.575 (CTAF)
HOUSTON DEP CON
134.45 284.0

TAKEOFF MINIMUMS

Rwys 14, 18, 32, 36: Standard with
minimum climb of 500' per NM to 520.

NOTE: RADAR required.
NOTE: DME/DME/IRU or GPS required.
NOTE: RNAV 1.



DEPARTURE ROUTE DESCRIPTION

TAKEOFF RWY 14: Climb heading 138° to 520 for RADAR vectors to KNTKY, thence . . .

TAKEOFF RWY 18: Climb heading 179° to 520 for RADAR vectors to KNTKY, thence . . .

TAKEOFF RWY 32: Climb heading 318° to 520 for RADAR vectors to KNTKY, thence . . .

TAKEOFF RWY 36: Climb heading 359° to 520 for RADAR vectors to KNTKY, thence . . .

. . . on track 032° to PEETY, then on track 032° to DARTR, then on track 031° to MUSIQ, then on track 031° to CLAVN, then on track 060° to STRYA, then on (transition). Maintain ATC assigned altitude. Expect filed altitude 10 minutes after departure.

DPATY TRANSITION (STRYA7.DPATY)

JBULL TRANSITION (STRYA7.JBULL)

NOTE: Chart not to scale.

SC-5, 15 AUG 2019 to 12 SEP 2019

SC-5, 15 AUG 2019 to 12 SEP 2019