

(STYCK7.STYCK) 19115

AL-164 (FAA)

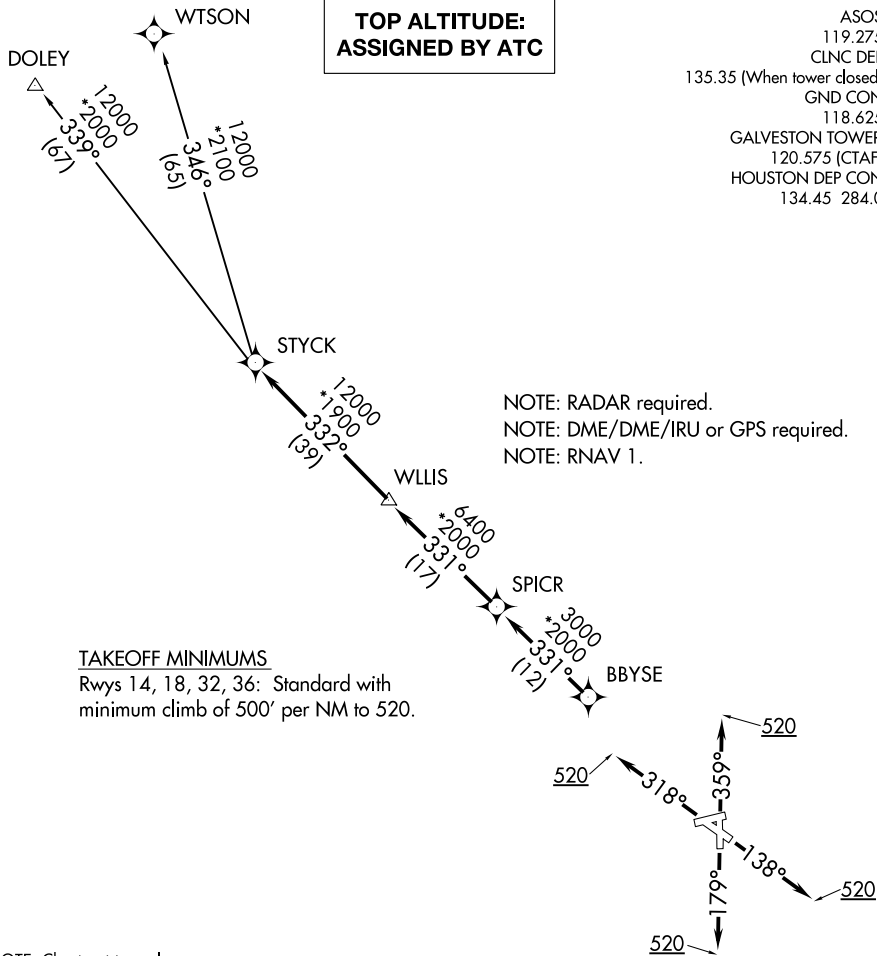
SCHOLES INTL AT GALVESTON (GLS)

STYCK SEVEN DEPARTURE (RNAV)

GALVESTON, TEXAS

**TOP ALTITUDE:
ASSIGNED BY ATC**

ASOS
 119.275
 CLNC DEL
 135.35 (When tower closed)
 GND CON
 118.625
 GALVESTON TOWER ★
 120.575 (CTAF)
 HOUSTON DEP CON
 134.45 284.0



SC-5, 15 AUG 2019 to 12 SEP 2019

SC-5, 15 AUG 2019 to 12 SEP 2019

NOTE: Chart not to scale.



DEPARTURE ROUTE DESCRIPTION

TAKEOFF RWY 14: Climb heading 138° to 520 for RADAR vectors to BBYSE, thence. . . .

TAKEOFF RWY 18: Climb heading 179° to 520 for RADAR vectors to BBYSE, thence. . . .

TAKEOFF RWY 32: Climb heading 318° to 520 for RADAR vectors to BBYSE, thence. . . .

TAKEOFF RWY 36: Climb heading 359° to 520 for RADAR vectors to BBYSE, thence. . . .

. . . on track 331° to SPICR, then on track 331° to WLLIS, then on track 332° to STYCK, then on (transition). Maintain ATC assigned altitude. Expect filed altitude 10 minutes after departure.

DOLEY TRANSITION (STYCK7.DOLEY)

WTSON TRANSITION (STYCK7.WTSON)

STYCK SEVEN DEPARTURE (RNAV)

GALVESTON, TEXAS

(STYCK7.STYCK) 25APR19

SCHOLES INTL AT GALVESTON (GLS)