

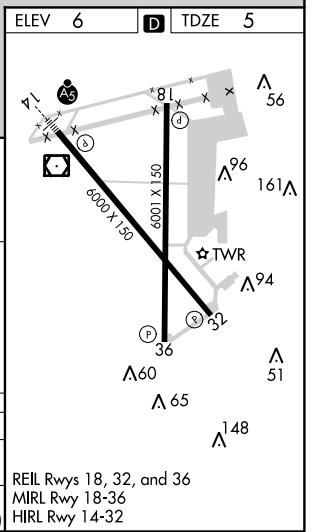
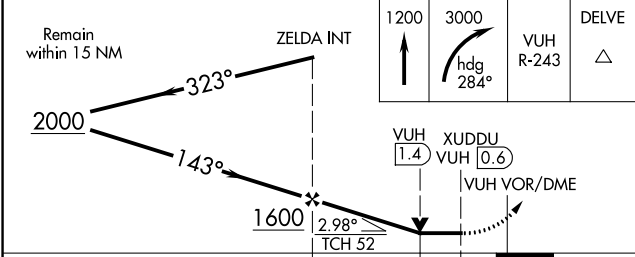
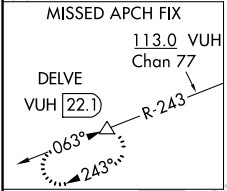
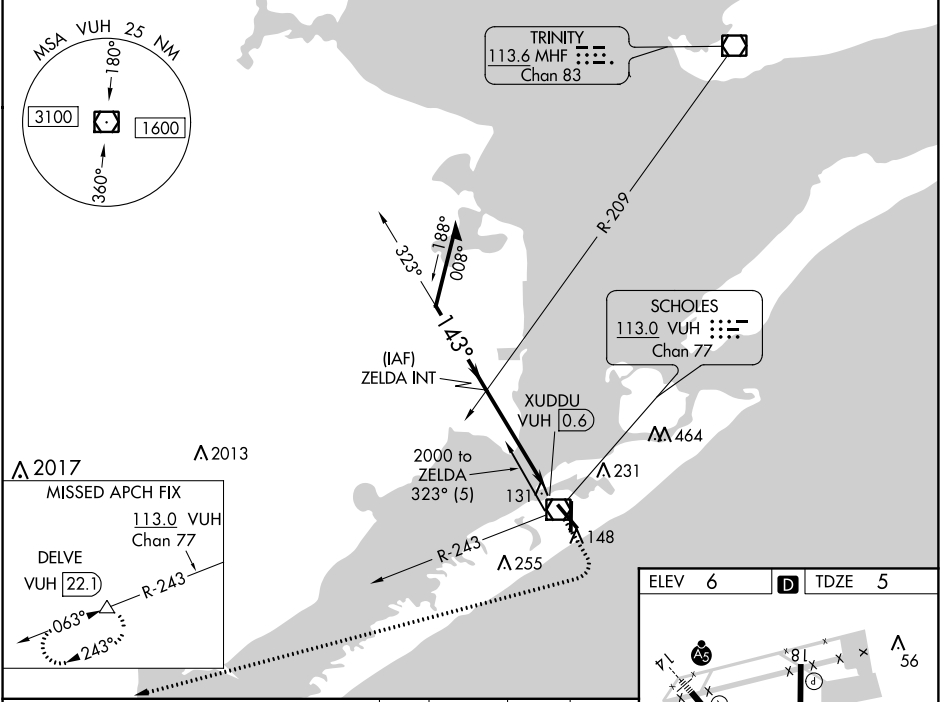
VOR/DME VUH 113.0 Chan 77	APP CRS 143°	Rwy Idg TDZE Apt Elev	6000 5 6
--	------------------------	-----------------------------	-------------------------------------

VOR RWY 14

SCHOLES INTL AT GALVESTON (GLS)

DME and RADAR required.		MALSR 	MISSED APPROACH: Climb to 1200 then climbing right turn to 3000 on heading 284° and VUH VOR/DME R-243 to DELVE/22.1 DME and hold.	
NA Circling NA east of Rwy 18 and northeast of Rwy 32.				

ASOS 119.275	HOUSTON APP CON 134.45 284.0	GALVESTON TOWER * 120.575 (CTAF)	GND CON 118.625	CLNC DEL 135.35 (When tower closed)	UNICOM 123.05
------------------------	--	---	---------------------------	--	-------------------------



CATEGORY	A	B	C	D	E
S-14	460-1/2	455 (500-1/2)	460-7/8	455 (500-7/8)	
CIRCLING	500-1	494 (500-1)	500-1 1/2 494 (500-1 1/2)	560-2 554 (600-2)	620-2 1/4 614 (700-2 1/4)

REIL Rwys 18, 32, and 36
MIRL Rwy 18-36
HIRL Rwy 14-32

SC-5, 15 AUG 2019 to 12 SEP 2019

SC-5, 15 AUG 2019 to 12 SEP 2019