

(WATFO5.WATFO) 19115

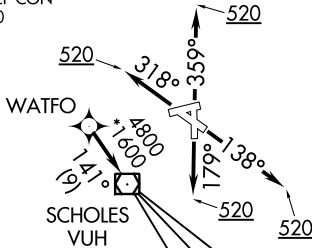
# WATFO FIVE DEPARTURE (RNAV)

AL-164 (FAA)

SCHOLES INTL AT GALVESTON (GLS)  
GALVESTON, TEXAS

ASOS  
119.275  
CLNC DEL  
135.35 (when tower closed)  
GND CON  
118.625  
GALVESTON TOWER★  
120.575 (CTAF)  
HOUSTON DEP CON  
134.45 284.0

**TOP ALTITUDE:  
ASSIGNED BY ATC**



TAKEOFF MINIMUMS:  
Rwy 14, 18, 32, 36: Standard with minimum climb of 500' per NM to 520.

NOTE: GPS required.  
NOTE: RADAR required.  
NOTE: RNAV 1.

NOTE: Chart not to scale.



## DEPARTURE ROUTE DESCRIPTION

TAKEOFF RWY 14: Climb on heading 138° to 520, for RADAR vectors to WATFO, thence. . . .  
TAKEOFF RWY 18: Climb on heading 179° to 520, for RADAR vectors to WATFO, thence. . . .  
TAKEOFF RWY 32: Climb on heading 318° to 520, for RADAR vectors to WATFO, thence. . . .  
TAKEOFF RWY 36: Climb on heading 359° to 520, for RADAR vectors to WATFO, thence. . . .

. . . on track 141° to VUH VOR/DME, then on (transition). Maintain ATC assigned altitude.  
Expect filed altitude 10 minutes after departure.

ANKRR TRANSITION (WATFO5.ANKRR)  
KELPP TRANSITION (WATFO5.KELPP)  
MUSYL TRANSITION (WATFO5.MUSYL)

**WATFO FIVE DEPARTURE (RNAV)**  
(WATFO5.WATFO) 25APR19

GALVESTON, TEXAS  
SCHOLES INTL AT GALVESTON (GLS)

SC-5, 15 AUG 2019 to 12 SEP 2019

SC-5, 15 AUG 2019 to 12 SEP 2019