

APP CRS	Rwy Idg	5004
165°	TDZE	5033
	Apt Elev	5039

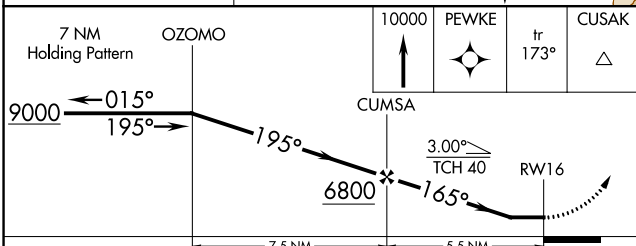
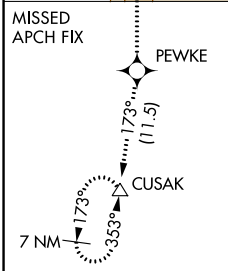
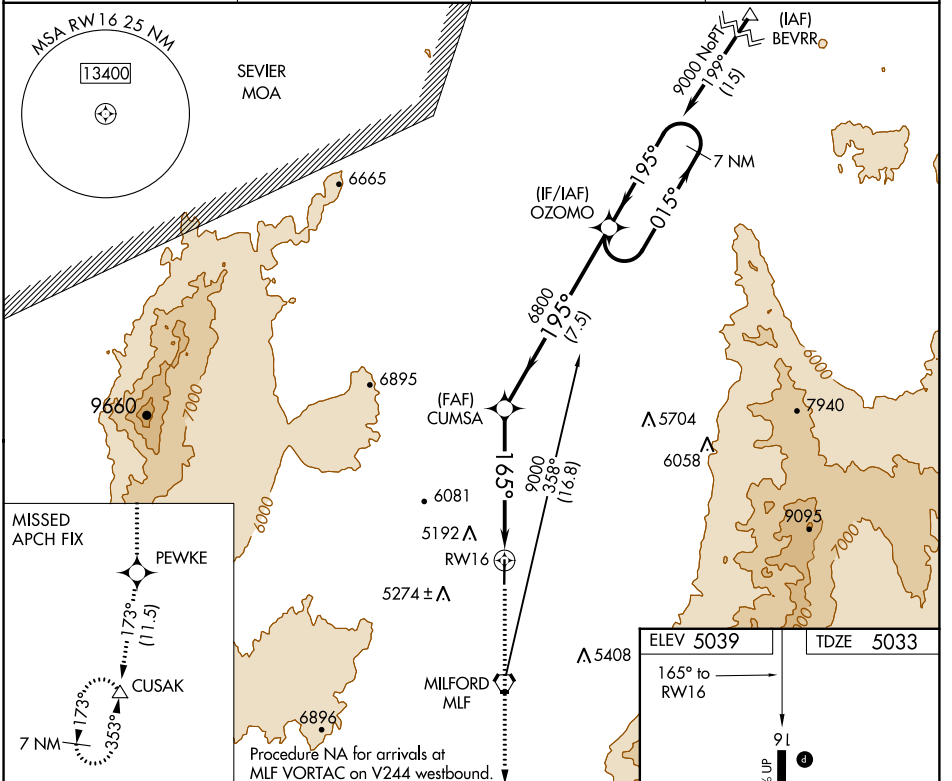
RNAV (GPS) RWY 16

MILFORD MUNI/BEN AND JUDY BRISCOE FIELD (MLF)

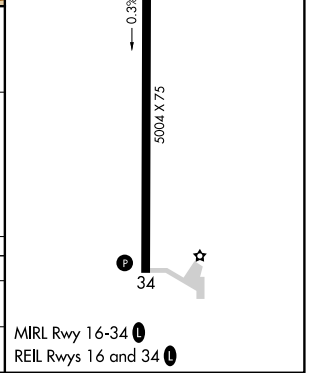
⚠ When local altimeter setting not received, use Cedar City altimeter setting and increase all MDA 200 feet and increase LNAV Cat C/D visibility ½ mile and Circling Cat C/D visibility ¾ mile. When VGSJ inop, procedure NA at night. DME/DME RNP-0.3 NA. Visibility reduction by helicopters NA.

⚠ MISSED APPROACH: Climb to 10000 direct PEWKE and on track 173° to CUSAK and hold.

ASOS 135.025	SALT LAKE CENTER 125.575 379.275	CEDAR CITY RADIO 122.1R	UNICOM 122.8 (CTAF)
------------------------	--	-----------------------------------	-------------------------------



CATEGORY	A	B	C	D
LNAV MDA	5480-1	447 (500-1)	5480-1 3/8	447 (500-1 3/8)
CIRCLING	5560-1 521 (600-1)	5580-1 541 (600-1)	5600-1 1/2 561 (600-1 1/2)	5680-2 641 (700-2)



SW-4, 15 AUG 2019 to 12 SEP 2019

SW-4, 15 AUG 2019 to 12 SEP 2019