

VORTAC MLF 112.1 Chan 58	APP CRS 344°	Rwy Idg TDZE Apt Elev 5039	N/A N/A
--	------------------------	--	------------

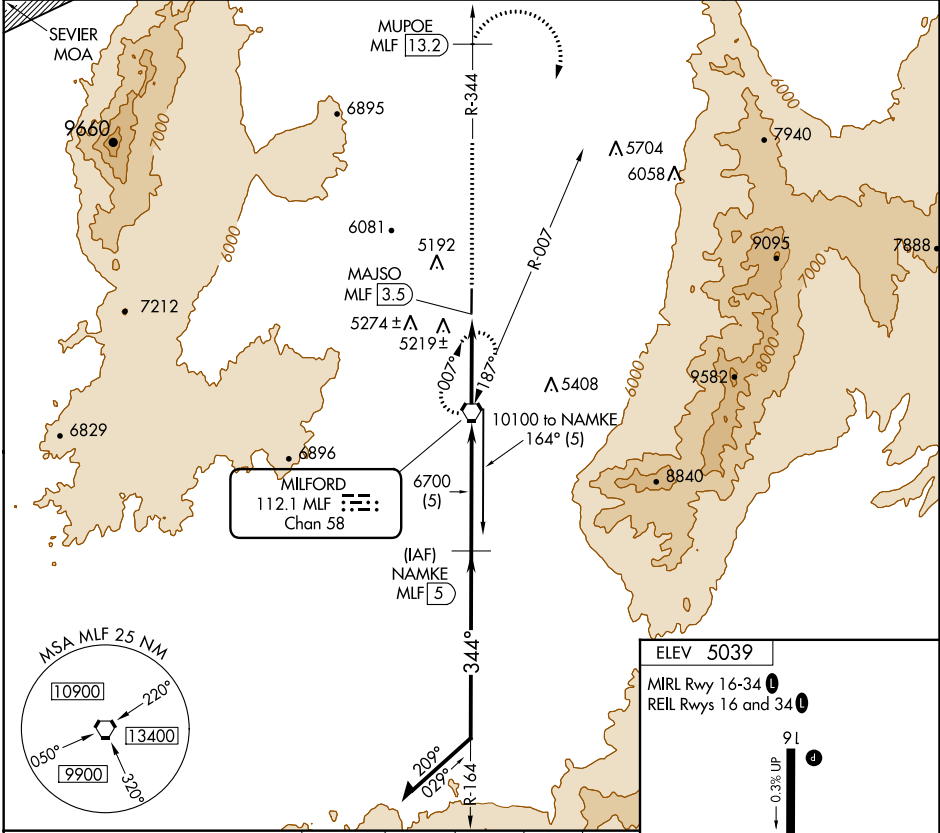
VOR/DME-A

MILFORD MUNI/BEN AND JUDY BRISCOE FIELD (MLF)

⚠ When local altimeter setting not received, use Cedar City altimeter setting and increase MDA 200 feet, and increase Cat C visibility ½ mile and Cat D visibility ¾ mile. When VGSi inop, procedure NA at night. Visibility reduction by helicopters NA.

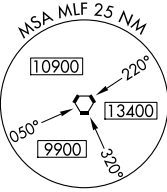
MISSED APPROACH: Climb on MLF VORTAC R-344 to MUPOE/MLF 13.2 DME then climbing right turn to 9600 on heading 150° and MLF VORTAC R-007 to MILFORD VORTAC and hold.

ASOS 135.025	SALT LAKE CENTER 125.575 379.275	CEDAR CITY RADIO 122.1R	UNICOM 122.8 (CTAF) 0
------------------------	--	-----------------------------------	---------------------------------

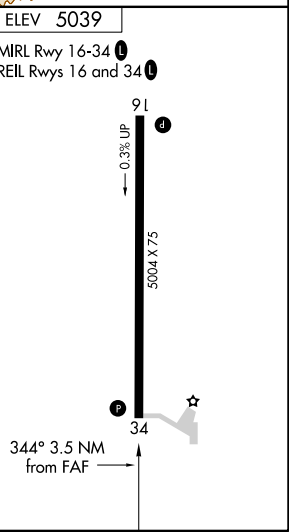
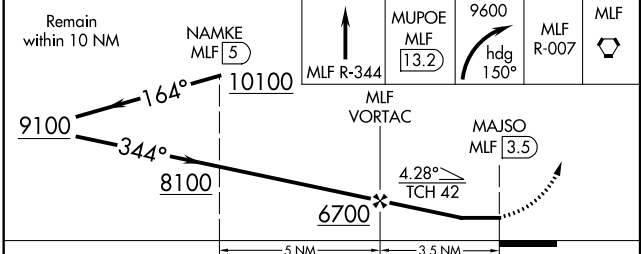
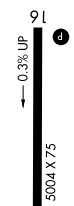


SW-4, 15 AUG 2019 to 12 SEP 2019

SW-4, 15 AUG 2019 to 12 SEP 2019



ELEV 5039
MIRL Rwy 16-34
REIL Rwys 16 and 34



CATEGORY	A	B	C	D
CIRCLING	5660-1	621 (700-1)	5660-1¾ 621 (700-1¾)	5680-2 641 (700-2)

VOR/DME-A