

PORTLAND, OREGON

HI-TACAN RWY 10R

TACAN CBU Chan 29	APCH CRS 106°	Rwy ldg 11,000 TDZE 24 Arprt Elev 31
----------------------	------------------	--

JAL-330 [USAF]

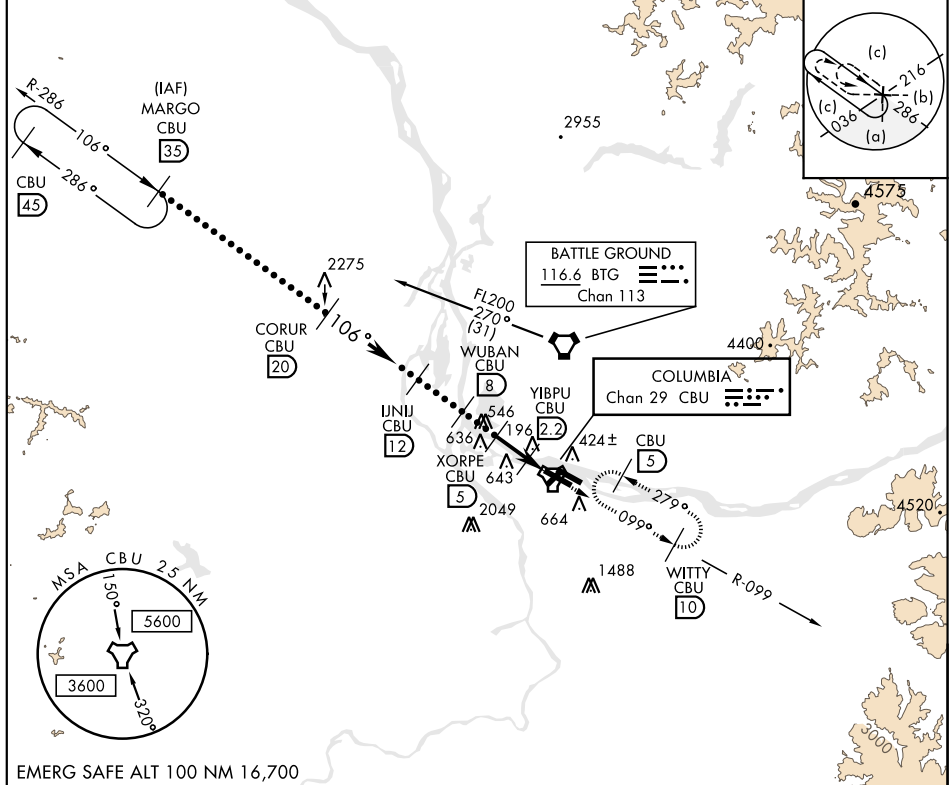
PORTLAND INTL (KPDX)

▼ * When ALS inop, increase CAT C RVR to 50 and vis to 1½ miles, CAT DE vis to 1¾ miles.
 ** When VGSI rwy 28R inop, circling rwy 28R NA at night.

ALSF-2

MISSED APPROACH: Climb to 4000 via CBU TACAN R-099 to WITTY/CBU 10 DME and hold, continue climb in holding.

ATIS 128.35 269.9	PORTLAND APP CON 118.1 284.6 (100°-279°) 124.35 299.2 (280°-099°)	PORTLAND TOWER 118.7 257.8 Rwy 10L-28R 123.775 251.125 Rwy 3-21, 10R-28L	GND CON 121.9 348.6	CLNC DEL 120.125 318.1
----------------------	---	--	------------------------	---------------------------



EMERG SAFE ALT 100 NM 16,700

MARGO R-286 CBU 35	VGSI and descent angles not coincident.		4000 CBU R-099	WITTY CBU 10	ELEV 31	TDZE 24
FL200	CORUR 20	IJNU 12	WUBAN 8	XORPE 5	YIBPU 2.2	TACAN
7500	3600	2500	1600	620		
← 4.4 NM →						
CATEGORY	C	D	E			
S-10R*	460/40 436 (500-¾)	460/50 436 (500-1)				
CIRCLING**	760-2 729 (800-2)	1000-3 969 (1000-3)	1160-3 1129 (1200-3)			

Diagram showing TACAN R-099, WITTY CBU 10, TWX 291, and various altitudes (96±, 127±, 9825 x 150, 11,000, 1500, 1000, 1500, 1000, 1500, 1000, 1500).

Rwy 10L ldg 8535'
 Rwy 28R ldg 9290'
 REIL Rwy 3-21
 TDZL/CL Rwy 10R
 MIRL Rwy 3-21
 HIRL Rwy 10L-28R, 28L-10R

PORTLAND, OREGON

45°35'N-122°36'W

PORTLAND INTL (KPDX)

Amtd 1 18OCT12

HI-TACAN RWY 10R

NW-1, 15 AUG 2019 to 12 SEP 2019

NW-1, 15 AUG 2019 to 12 SEP 2019