

LOC/DME I-JMJ 110.5 Chan 42	APP CRS 283°	Rwy ldg 11000 TDZE 23 Apt Elev 31
--	------------------------	--

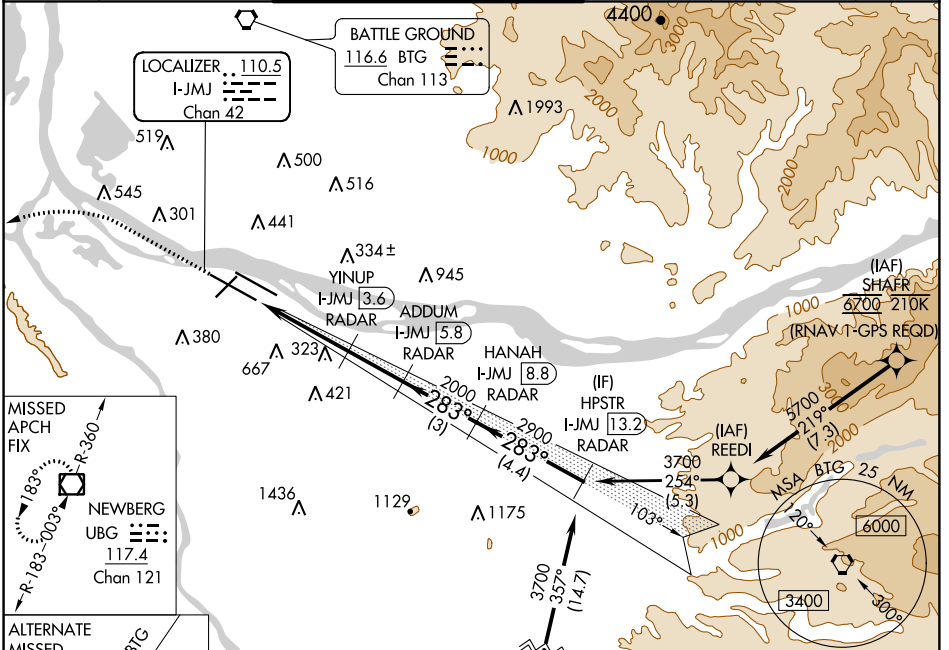
ILS or LOC RWY 28L

PORTLAND INTL (PDX)

Simultaneous approach authorized. Autopilot coupled approach NA below 880. DME or RADAR required. For inop ALS, increase S-ILS 28L Cat E visibility to RVR 4500 and increase S-LOC 28L Cat E visibility to 1 1/2 SM.

MALSR MISSED APPROACH: Climb to 2100 then climbing left turn to 4000 on UBG R-360 to UBG VOR/DME and hold.

D-ATIS 128.35 269.9	PORTLAND APP CON 124.35 299.2	PORTLAND TOWER Rwys 10L-28R 118.7 257.8 Rwys 3-21, 10R-28L 123.775 251.125	GND CON 121.9 348.6	CLNC DEL 120.125 318.1	CPDLC
---	---	--	-------------------------------	----------------------------------	-------



NW-1, 15 AUG 2019 to 12 SEP 2019

NW-1, 15 AUG 2019 to 12 SEP 2019

Procedure NA for arrivals at MAVER on V448 southbound and on V165 eastbound.

MAVER (RNAV 1- GPS REQD)

HPSTR I-JMJ [13.2] RADAR

HANAH I-JMJ [8.8] RADAR

ADDUM I-JMJ [5.8] RADAR

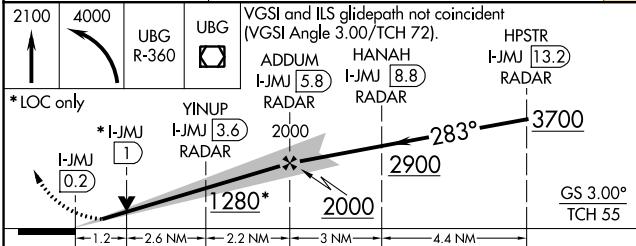
YINUP I-JMJ [3.6] RADAR

ENDZZ BTG [23]

ALTERNATE MISSED APCH FIX

NEWBERG UBG [117.4] Chan 121

MISSED APCH FIX



ELEV 31	TDZE 23
---------	---------

REIL Rwys 3 and 21
TDZ/CL Rwy 10R
MIRL Rwy 3-21
HIRL Rwys 10L-28R and 10R-28L

Knots	60	90	120	150	180
Min:Sec	6:00	4:00	3:00	2:24	2:00