

(MINNE5.MINNE) 17341

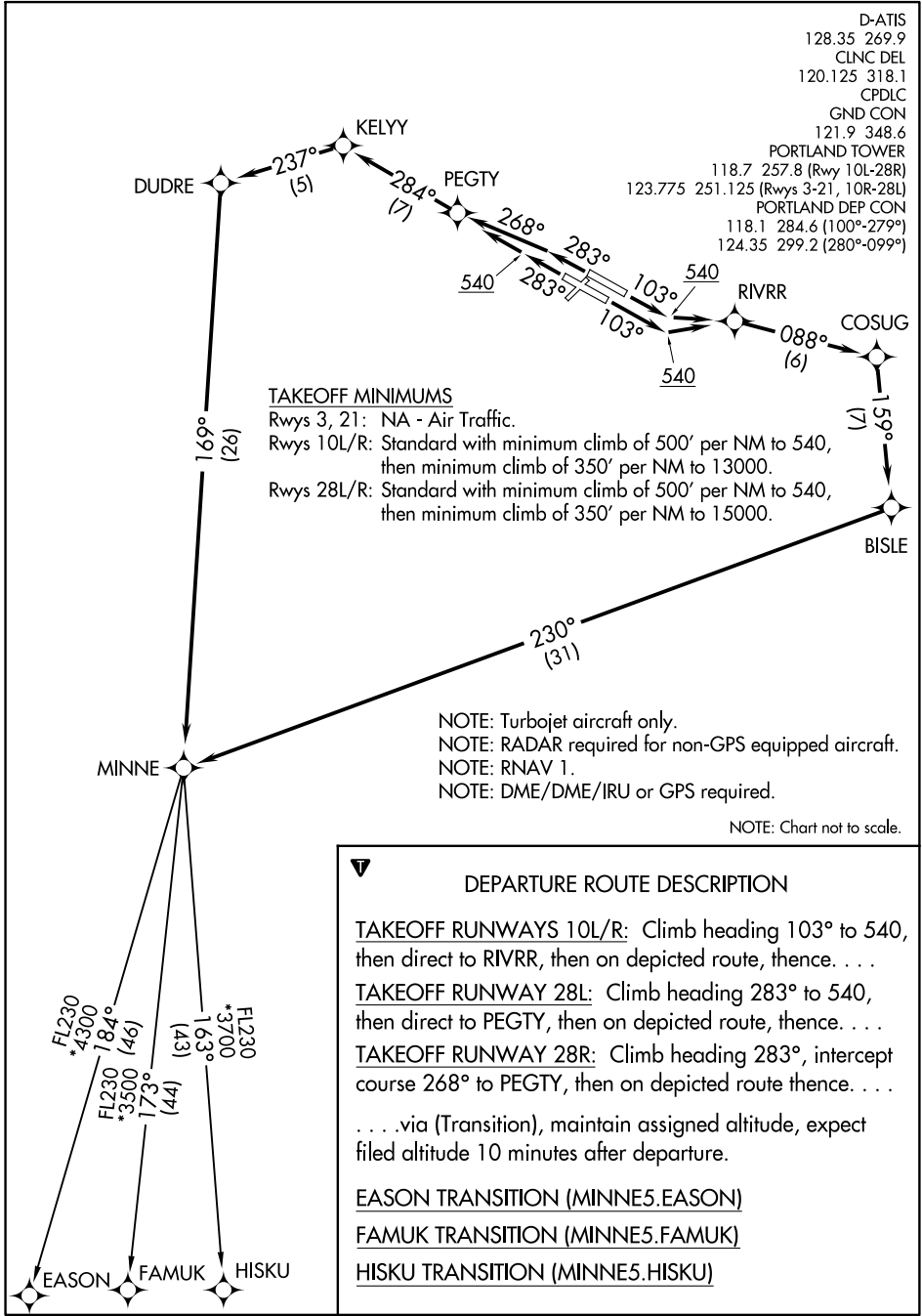
MINNE FIVE DEPARTURE (RNAV)

AL-330 (FAA)

PORTLAND INTL (PDX)
PORTLAND, OREGON

NW-1, 15 AUG 2019 to 12 SEP 2019

NW-1, 15 AUG 2019 to 12 SEP 2019



D-ATIS
128.35 269.9
CLNC DEL
120.125 318.1
CPDLC
GND CON
121.9 348.6
PORTLAND TOWER
118.7 257.8 (Rwy 10L-28R)
123.775 251.125 (Rwys 3-21, 10R-28L)
PORTLAND DEP CON
118.1 284.6 (100°-279°)
124.35 299.2 (280°-099°)

TAKEOFF MINIMUMS
Rwys 3, 21: NA - Air Traffic.
Rwys 10L/R: Standard with minimum climb of 500' per NM to 540, then minimum climb of 350' per NM to 13000.
Rwys 28L/R: Standard with minimum climb of 500' per NM to 540, then minimum climb of 350' per NM to 15000.

NOTE: Turbojet aircraft only.
NOTE: RADAR required for non-GPS equipped aircraft.
NOTE: RNAV 1.
NOTE: DME/DME/IRU or GPS required.
NOTE: Chart not to scale.

MINNE FIVE DEPARTURE (RNAV)
(MINNE5.MINNE) 08JAN15

PORTLAND, OREGON
PORTLAND INTL (PDX)