


RNAV (RNP) Y RWY 28R

PORTLAND INTL (PDX)

APP CRS	Rwy Idg	9290
283°	TDZE	31
	Apt Elev	31

V For uncompensated Baro-VNAV systems, procedure NA below -7°C (20°F) or above 54°C (130°F). For inop MALS, increase RNP 0.20 all Cats visibility to 1 1/4 mile, and increase RNP 0.30 all Cats visibility to 1 3/8 mile. RF required. GPS required. Use of FD or AP providing RNAV track guidance required during simultaneous operations. Simultaneous approach authorized with Rwy 28L.

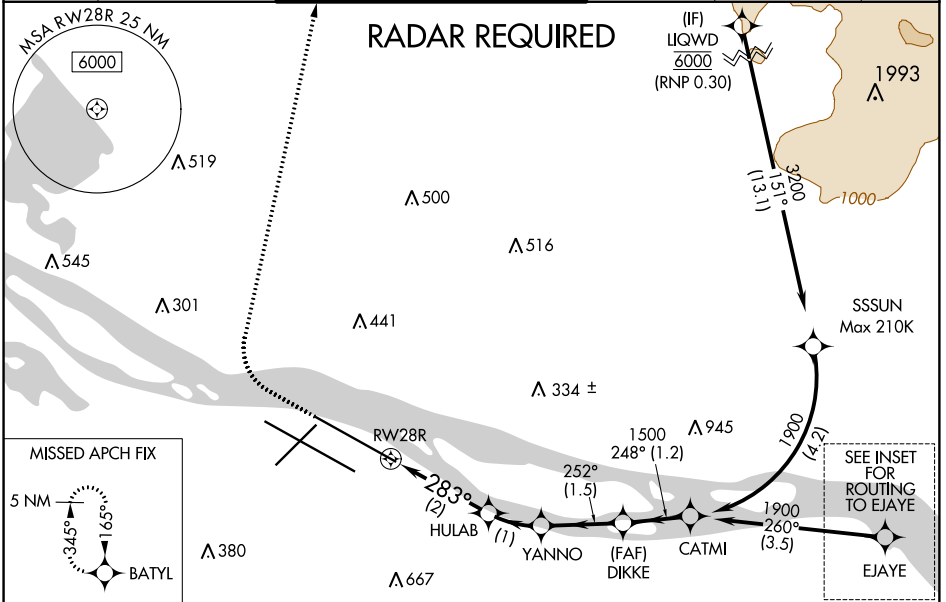
MALS R

MISSED APPROACH:
 Climb to 600 then climbing right turn to 4400 direct BATYL and hold, continue climb-in-hold to 4400.

D-ATIS	PORTLAND APP CON
128.35	124.35 299.2
269.9	

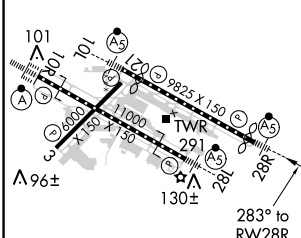
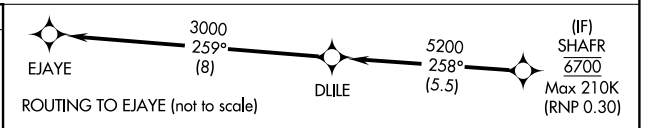
PORTLAND TOWER	
Rwy 10L-28R	Rwys 3-21, 10R-28L
118.7 257.8	123.775 251.125

GND CON
121.9 348.6

CLNC DEL	CPDLC
120.125 318.1	



ELEV	31	D	TDZE	31
------	-----------	----------	------	-----------



VGSI and RNAV glidepath not coincident (VGSI Angle 3.00°/TCH 70).	CATMI
GP 3.00° TCH 54	

CATEGORY	A	B	C	D
RNP 0.20 DA		403/40	372 (400-3/4)	
RNP 0.30 DA		455/50	424 (500-1)	

AUTHORIZATION REQUIRED

NW-1, 15 AUG 2019 to 12 SEP 2019

NW-1, 15 AUG 2019 to 12 SEP 2019