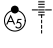


APP CRS	Rwy Idg	<b>8535</b>
<b>103°</b>	TDZE	<b>30</b>
	Apt Elev	<b>31</b>

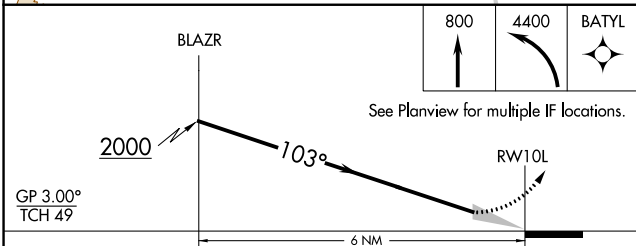
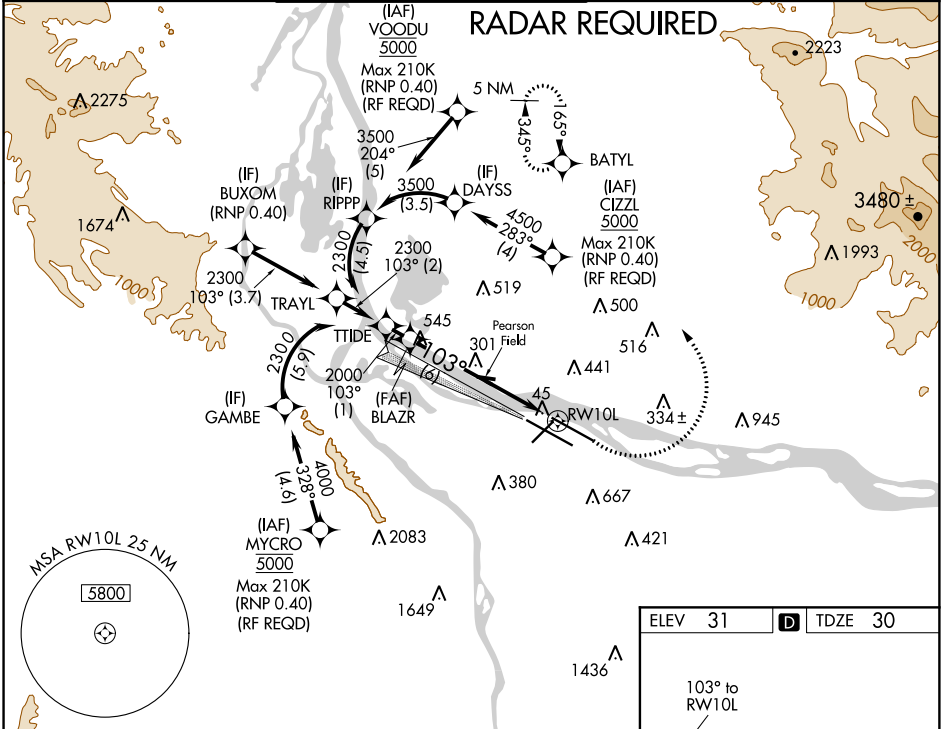
# RNAV (RNP) Z RWY 10L

PORTLAND INTL (PDX)

**GPS required.** For inop MALSR, increase RNP 0.30 all Cats visibility to RVR 5500. For uncompensated Baro-VNAV systems, procedure NA below -6°C (22°F) or above 54°C (130°F). Simultaneous approach authorized with Rwy 10R, except for arrivals at CIZLZ, VOODOU, and MYCRO. Use of FD or AP providing RNAV track guidance required for simultaneous operations.

**MALSR**  
  
**MISSED APPROACH:** Climb to 800 then climbing left turn to 4400 direct BATYL and hold, continue climb-in-hold to 4400.

D-ATIS <b>128.35</b> <b>269.9</b>	PORTLAND APP CON <b>124.35 299.2</b>	PORTLAND TOWER Rwy 10L-28R <b>118.7 257.8</b> Rwys 3-21, 10R-28L <b>123.775 251.125</b>	GND CON <b>121.9 348.6</b>	CLNC DEL <b>120.125 318.1</b>	CPDLC
---	---	---	-------------------------------	----------------------------------	-------



ELEV 31	<b>D</b> TDZE 30
---------	------------------

103° to RWY 10L

101, 101, 120, 9825 X 150, TWY 291, 11000, 8000 X 150, 130±, 28R, 28L, 9%±

REIL Rwys 3 and 21  
 TDZ/CL Rwy 10R  
 MIRL Rwy 3-21  
 HIRL Rwys 10L-28R and 10R-28L

CATEGORY	A	B	C	D
RNP 0.30 DA	365/32 335 (400- $\frac{5}{8}$ )			
<b>AUTHORIZATION REQUIRED</b>				

NW-1, 15 AUG 2019 to 12 SEP 2019

NW-1, 15 AUG 2019 to 12 SEP 2019