

APP CRS	Rwy Idg	<b>11000</b>
<b>103°</b>	TDZE	<b>24</b>
	Apt Elev	<b>31</b>

# RNAV (RNP) Z RWY 10R

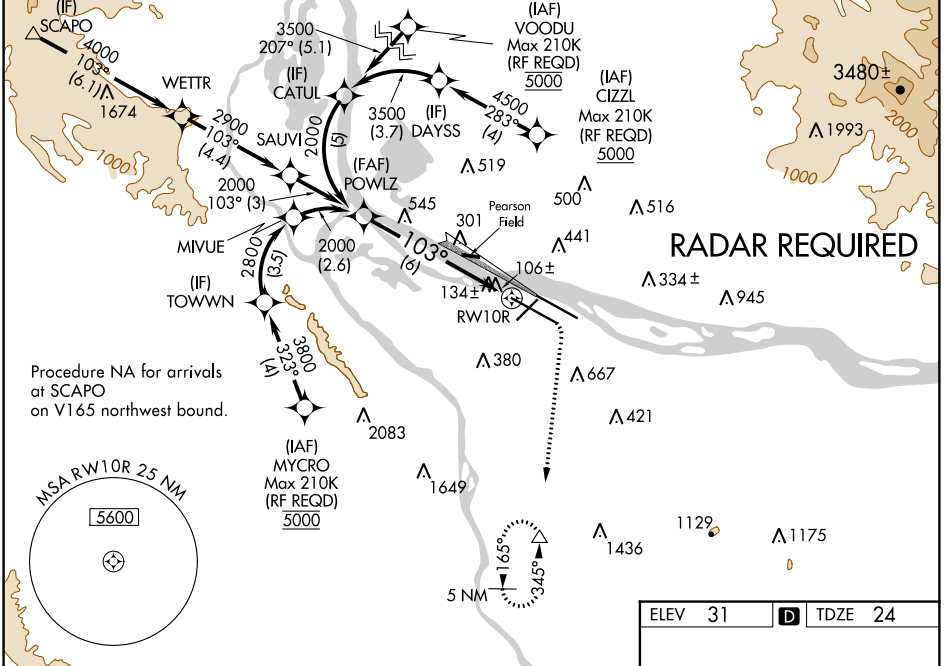
PORTLAND INTL (PDX)

GPS required. For inoperative ALSF, increase RNP 0.10 all Cats visibility to RVR 5000 and 0.30 all Cats visibility to 1 1/2 miles. For uncompensated Baro-VNAV systems, procedure NA below -15°C (5°F) or above 54°C (130°F). Simultaneous approach authorized with Rwy 10L. Use of FD or AP providing RNAV track guidance required during simultaneous operations.



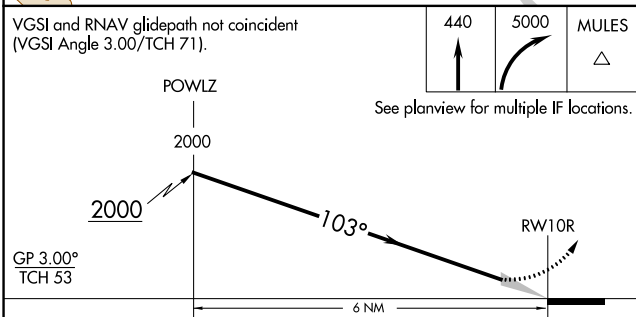
MISSED APPROACH: Climb to 440 then climbing right turn to 5000 direct MULES and hold, continue climb-in-hold to 5000.

D-ATIS <b>128.35</b> <b>269.9</b>	PORTLAND APP CON <b>124.35 299.2</b>	PORTLAND TOWER Rwy 10L-28R <b>118.7 257.8</b>	Rwys 3-21, 10R-28L <b>123.775 251.125</b>	GND CON <b>121.9 348.6</b>	CLNC DEL <b>120.125 318.1</b>	CPDLC
---	---	---	--	-------------------------------	----------------------------------	-------



NW-1, 15 AUG 2019 to 12 SEP 2019

NW-1, 15 AUG 2019 to 12 SEP 2019



CATEGORY	A	B	C	D
RNP 0.10 DA		347/32	323 (400-3/4)	
RNP 0.30 DA		449/50	425 (500-1)	

**AUTHORIZATION REQUIRED**

ELEV 31	<b>D</b>	TDZE 24
---------	----------	---------

REIL Rwys 3 and 21  
TDZ/CL Rwy 10R  
MIRL Rwy 3-21  
HIRL Rwys 10L-28R and 10R-28L