


WAAS CH <b>81804</b> <b>W10B</b>	APP CRS <b>103°</b>	Rwy Idg <b>8535</b> TDZE <b>30</b> Apt Elev <b>31</b>
----------------------------------------	------------------------	-------------------------------------------------------------

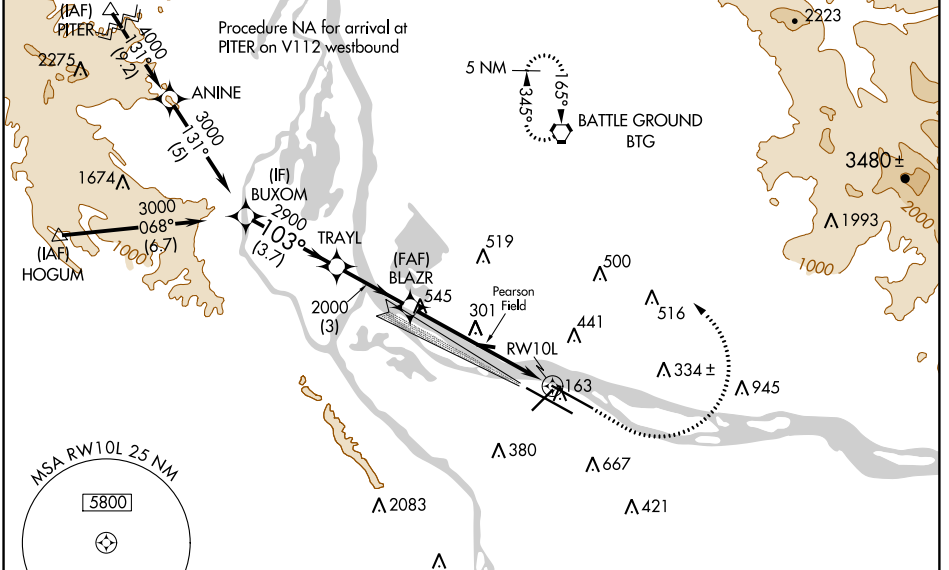
# RNAV (GPS) Y RWY 10L

PORTLAND INTL (PDX)

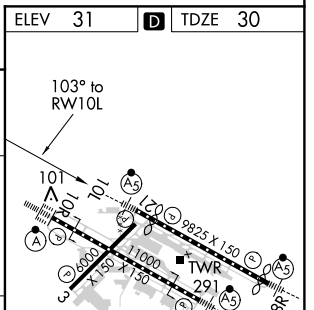
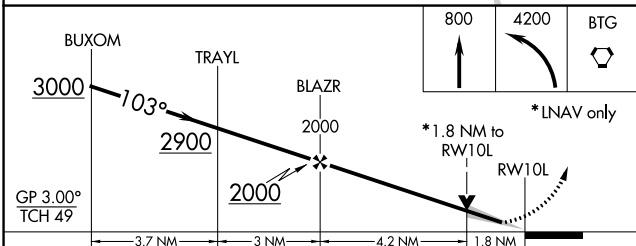
**⚠** For uncompensated Baro-VNAV systems, LNAV/VNAV NA below -15°C (5°F) or above 54°C (130°F). DME/DME RNP-0.3 NA. Simultaneous approach authorized with Rwy 10R. Use of FD or AP providing RNAV track guidance required during simultaneous operations. LNAV procedure NA during simultaneous operations. For inoperative MALSR, increase LPV visibility all Cats to RVR 4500. Increase LNAV/VNAV visibility all Cats to 1½ mile, and LNAV Cat C and D visibility to 1¾ mile.

**MALSR**  
 MISSED APPROACH: Climb to 800 then dimbing left turn to 400 direct BTG VORTAC and hold, continue climb-in-hold to 4200.

D-ATIS <b>128.35</b> <b>269.9</b>	PORTLAND APP CON <b>124.35 299.2</b>	PORTLAND TOWER Rwy 10L-28R <b>118.7 257.8</b> Rwys 3-21, 10R-28L <b>123.775 251.125</b>	GND CON <b>121.9 348.6</b>	CLNC DEL <b>120.125 318.1</b>	CPDLC
-----------------------------------------	-----------------------------------------	-----------------------------------------------------------------------------------------------	-------------------------------	----------------------------------	-------



ELEV 31	<b>D</b> TDZE 30
---------	------------------



CATEGORY	A	B	C	D
LPV DA		296/24	266 (300-½)	
LNAV/VNAV DA		413/45	383 (400-¾)	
LNAV MDA	640-1	610 (700-1)	640-1¾	610 (700-1¾)
CIRCLING	720-1 689 (700-1)	740-1 709 (800-1)	760-2 729 (800-2)	980-3 949 (1000-3)

REIL Rwys 3 and 21  
TDZ/CL Rwy 10R  
MIRL Rwy 3-21  
HIRL Rwys 10L-28R and 10R-28L

NW-1, 15 AUG 2019 to 12 SEP 2019

NW-1, 15 AUG 2019 to 12 SEP 2019