

WAAS CH <b>40004</b> W10A	APP CRS <b>103°</b>	Rwy Idg TDZE Apt Elev	<b>11000</b> <b>24</b> <b>31</b>
---------------------------------	------------------------	-----------------------------	--

# RNAV (GPS) Y RWY 10R

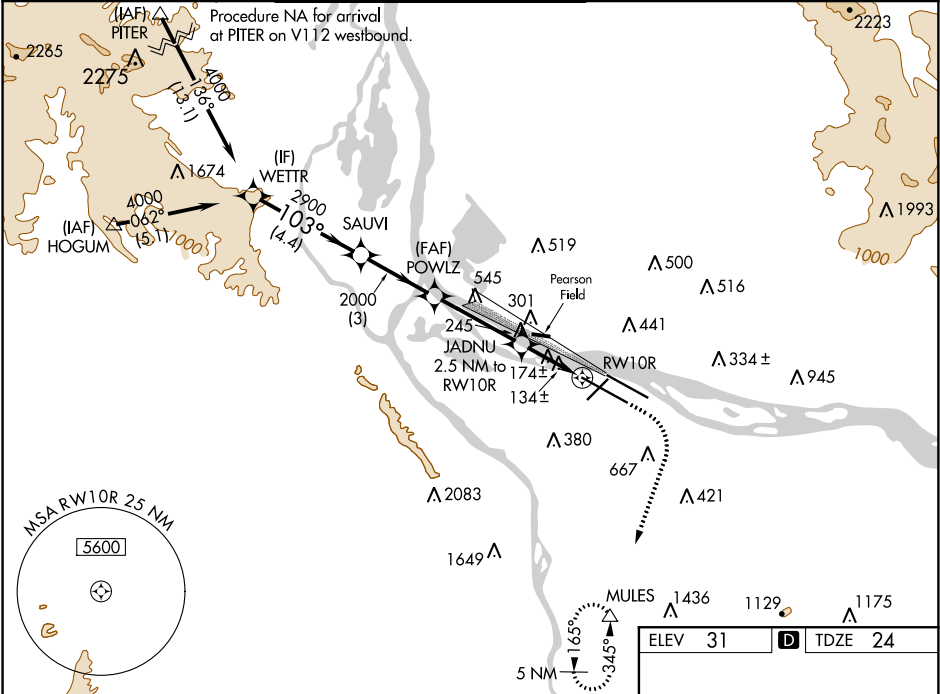
PORTLAND INTL (PDX)

**⚠** For uncompensated Baro-VNAV systems, LNAV/VNAV NA below -1.5°C (5°F) or above 54°C (130°F). DME/DME RNP-0.3 NA. Simultaneous approach authorized with Rwy 10L. Use of FD or AP providing RNAV track guidance required during simultaneous operations. LNAV procedure NA during simultaneous operations.

**ALSIF-2**  
**(A)**

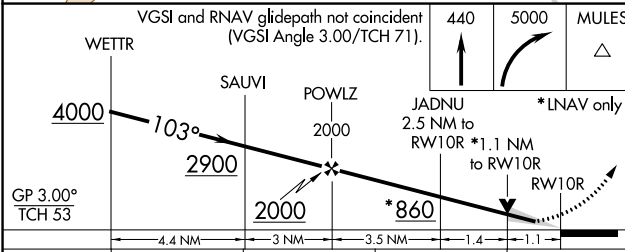
**MISSED APPROACH:** Climb to 440 then climbing right turn to 5000 direct MULES and hold.

D-ATIS <b>128.35</b> <b>269.9</b>	PORTLAND APP CON <b>124.35 299.2</b>	PORTLAND TOWER Rwy 10L-28R <b>118.7 257.8</b>	Rwys 3-21, 10R-28L <b>123.775 251.125</b>	GND CON <b>121.9 348.6</b>	CLNC DEL <b>120.125 318.1</b>	CPDLC
---	---	---	--	-------------------------------	----------------------------------	-------



NW-1, 15 AUG 2019 to 12 SEP 2019

NW-1, 15 AUG 2019 to 12 SEP 2019



ELEV 31	<b>D</b> TDZE 24
---------	------------------

CATEGORY	A	B	C	D
LPV DA		224/18	200 (200-½)	
LNAV/VNAV DA		329/24	305 (300-½)	
LNAV MDA	440/24	416 (500-½)	440/40	416 (500-¾)
CIRCLING	720-1 689 (700-1)	740-1 709 (800-1)	760-2 729 (800-2)	980-3 949 (1000-3)

