

PORTLAND, OREGON

# TACAN RWY 28L

TACAN CBU Chan <b>29</b>	APCH CRS <b>275°</b>	Rwy ldg <b>11,000</b> TDZE <b>23</b> Arpt Elev <b>31</b>
--------------------------	----------------------	--

AL-330 [USAF]

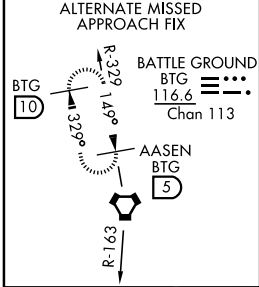
PORTLAND INTL (KPDX)

⚠ \*When ALS inop, increase CAT AB RVR to 50 and vis to 1 mile, CAT C vis to 1½ miles, CAT D vis to ¾ miles, CAT E vis to 2 miles  
 ⚠ \*\*When VGSI rwy 28R inop, circling rwy 28R NA at night.

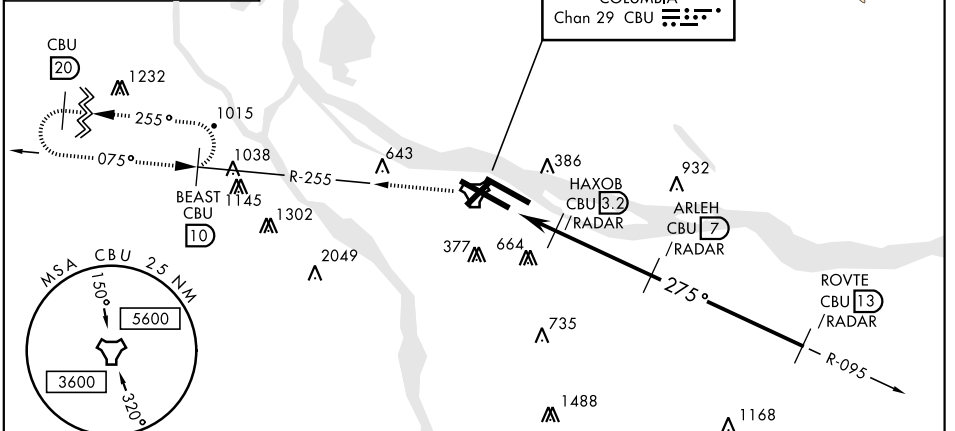


† MISSED APPROACH: Climbing left turn to 4000 via CBU TACAN R-255 to BEAST INT/ CBU 10 DME and hold or when directed by ATC.

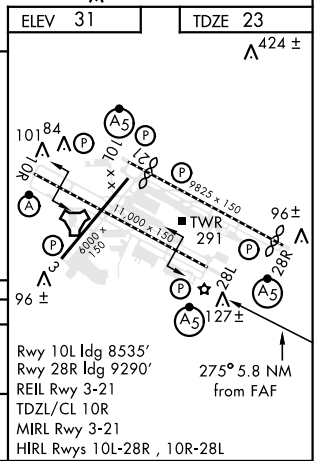
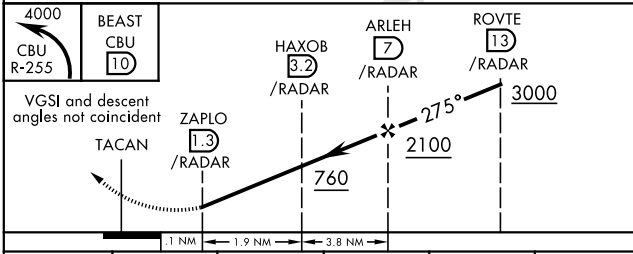
ATIS <b>128.35 269.9</b>	PORTLAND APP CON <b>124.35 299.2</b>	PORTLAND TOWER <b>118.7 257.8</b> Rwy 10L-28R <b>123.775 251.125</b> Rwy 3-21, 10R-28L	GND CON <b>121.9 348.6</b>	CLNC DEL <b>120.125 318.1</b>
--------------------------	--------------------------------------	---	----------------------------	-------------------------------



† ALTERNATE MISSED APPROACH: Climb to 4300 via BTG VORTAC R-163 to BTG then via BTG R-329 to AASEN INT and hold.



## RADAR REQUIRED



PORTLAND, OREGON  
Amdt 1 18OCT12

45°35'N-122°36'W

PORTLAND INTL (KPDX)

# TACAN RWY 28L

NW-1, 15 AUG 2019 to 12 SEP 2019

NW-1, 15 AUG 2019 to 12 SEP 2019