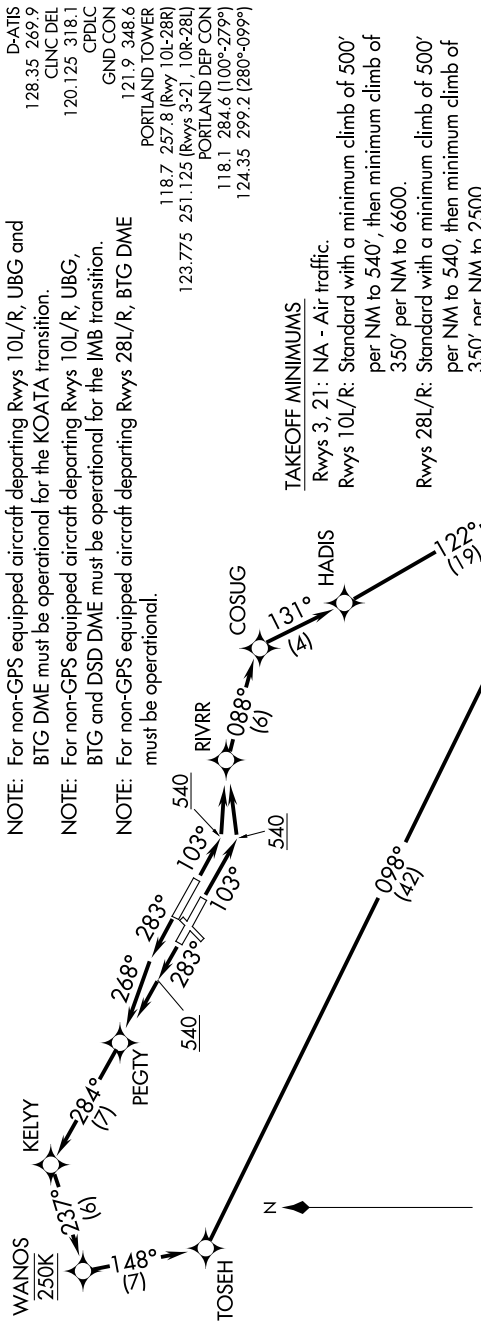


# WHAMY FOUR DEPARTURE (RNAV)

AL-330 (FAA)

61.03E 20.02T '15 AUG 2019 to 12 SEP 2019



**NOTE:** For non-GPS equipped aircraft departing Rwy's 10L/R, UBG and BTG DME must be operational for the KOATA transition.

**NOTE:** For non-GPS equipped aircraft departing Rwy's 10L/R, UBG, BTG and DSD DME must be operational for the IMB transition.

**NOTE:** For non-GPS equipped aircraft departing Rwy's 28L/R, BTG DME must be operational.

**TAKEOFF MINIMUMS**

Rwy's 3, 21: NA - Air traffic.

Rwy's 10L/R: Standard with a minimum climb of 500' per NM to 540', then minimum climb of 350' per NM to 6600.

Rwy's 28L/R: Standard with a minimum climb of 500' per NM to 540', then minimum climb of 350' per NM to 2500.

**▼ DEPARTURE ROUTE DESCRIPTION**

**TAKEOFF RUNWAYS 10L/R:** Climb heading 103° to 540, then direct to RIVRR, then on depicted route to WHAMY, thence. . . .

**TAKEOFF RUNWAY 28L:** Climb heading 283° to 540, then direct PEGTY, then on depicted route to WHAMY, thence. . . .

**TAKEOFF RUNWAY 28R:** Climb heading 283°, intercept course 268° to PEGTY, then on depicted route to WHAMY, thence. . . .

. . . via (transition), maintain assigned altitude, expect filed altitude 10 minutes after departure.

**KIMBERLY TRANSITION (WHAMY4.IMB)**

**KOATA TRANSITION (WHAMY4.KOATA)**

**RIELY TRANSITION (WHAMY4.RIELY)**

**NOTE:** Turbojet aircraft only.

**NOTE:** RADAR required for non-GPS equipped aircraft.

**NOTE:** RNAV 1.

**NOTE:** DME/DME/IRU or GPS required.

**NOTE:** Cross WANOS at 250K.

NOTE: Chart not to scale.