

(HARTT.HARTT1) 17173

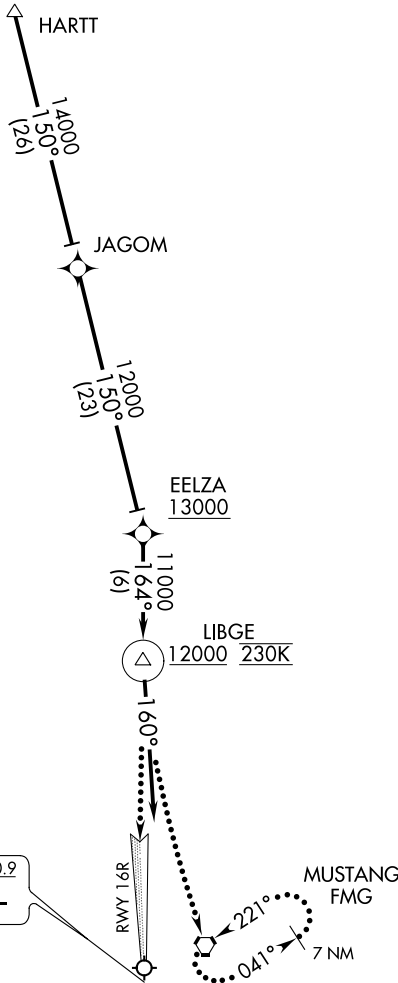
HARTT ONE ARRIVAL (RNAV)

AL-346 (FAA)

RENO/TAHOE INTL (RNO)
RENO, NEVADA

D-ATIS
 135.8 363.0
 RENO TOWER
 118.7 257.8
 NORCAL APP CON
 119.2 279.55
 126.3 353.9

**CAUTION: Intense
 Glider Activity
 to FL180.**



SW-4, 15 AUG 2019 to 12 SEP 2019

SW-4, 15 AUG 2019 to 12 SEP 2019

- NOTE: GPS required.
- NOTE: RNAV 1.
- NOTE: Cross EELZA at or above 13000.
- NOTE: Cross LIBGE at or above 12000 at 230 KTS.

NOTE: Chart not to scale.

ARRIVAL ROUTE DESCRIPTION

From HARTT on track 150° to JAGOM, then on track 150° to cross EELZA at or above 13000, then on track 164° to cross LIBGE at or above 12000 at 230 KTS. Then on heading 160° expect ILS RWY 16R or RADAR vectors.

LOST COMMUNICATIONS

At LIBGE, proceed inbound via RWY 16R ILS approach. If unable, climbing left turn to 12000 direct FMG VORTAC and hold.

HARTT ONE ARRIVAL (RNAV)
 (HARTT.HARTT1) 25AUG11

RENO, NEVADA
 RENO/TAHOE INTL (RNO)