

LOC/DME I-AGY <b>109.9</b> Chan <b>36</b>	APP CRS <b>344°</b>	Rwy Idg <b>10002</b> TDZE <b>4410</b> Apt Elev <b>4415</b>
-------------------------------------------------	------------------------	------------------------------------------------------------------

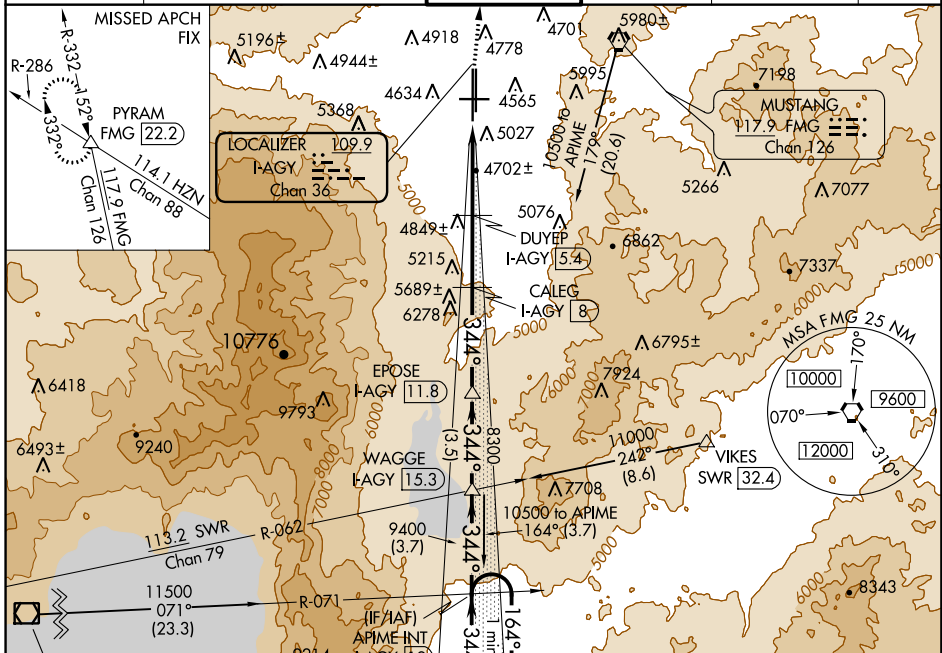
# ILS or LOC/DME RWY 34L

RENO/TAHOE INTL (RNO)

**⚠** Inoperative table does not apply.  
If local altimeter setting not received, procedure NA.  
**⚠** -1.5°C Circling Rwy 7 NA at night.

**MALSR** MISSED APPROACH: Climb to 11000 via heading 350° and FMG VORTAC R-332 to PYRAM INT/FMG 22.2 DME and hold, continue climb-in-hold to 11000.

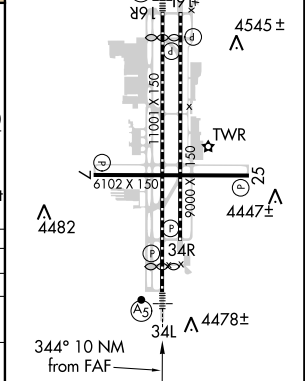
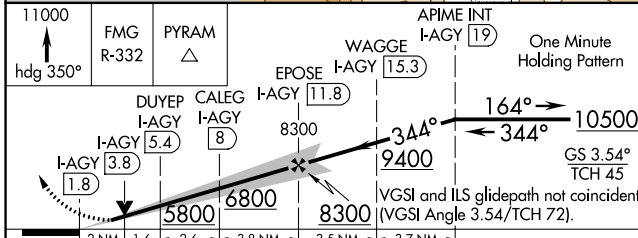
D-ATIS <b>135.8 363.0</b>	NORCAL APP CON <b>119.2 279.55 126.3 353.9</b>	RENO TOWER <b>118.7 257.8</b>	GND CON <b>121.9 348.6</b>	CLNC DEL <b>124.9 370.85</b>	CPDLC
------------------------------	---------------------------------------------------	----------------------------------	-------------------------------	---------------------------------	-------



SW-4, 15 AUG 2019 to 12 SEP 2019

SW-4, 15 AUG 2019 to 12 SEP 2019

ELEV 4415	<b>D</b>	TDZE 4410
HIRL Rws 16R-34L and 16L-34R		
REIL Rws 7, 16L, 25, and 34R		
MIRL Rwy 7-25		
Λ 4474±		



CATEGORY	A	B	C	D
S-ILS 34L	4946-1½ 536 (600-1½)			NA
S-LOC 34L	5120-1 710 (800-1)		5120-2 710 (800-2)	NA
CIRCLING	5340-1¼ 925 (1000-1¼)		5340-2¾ 925 (1000-2¾)	NA