

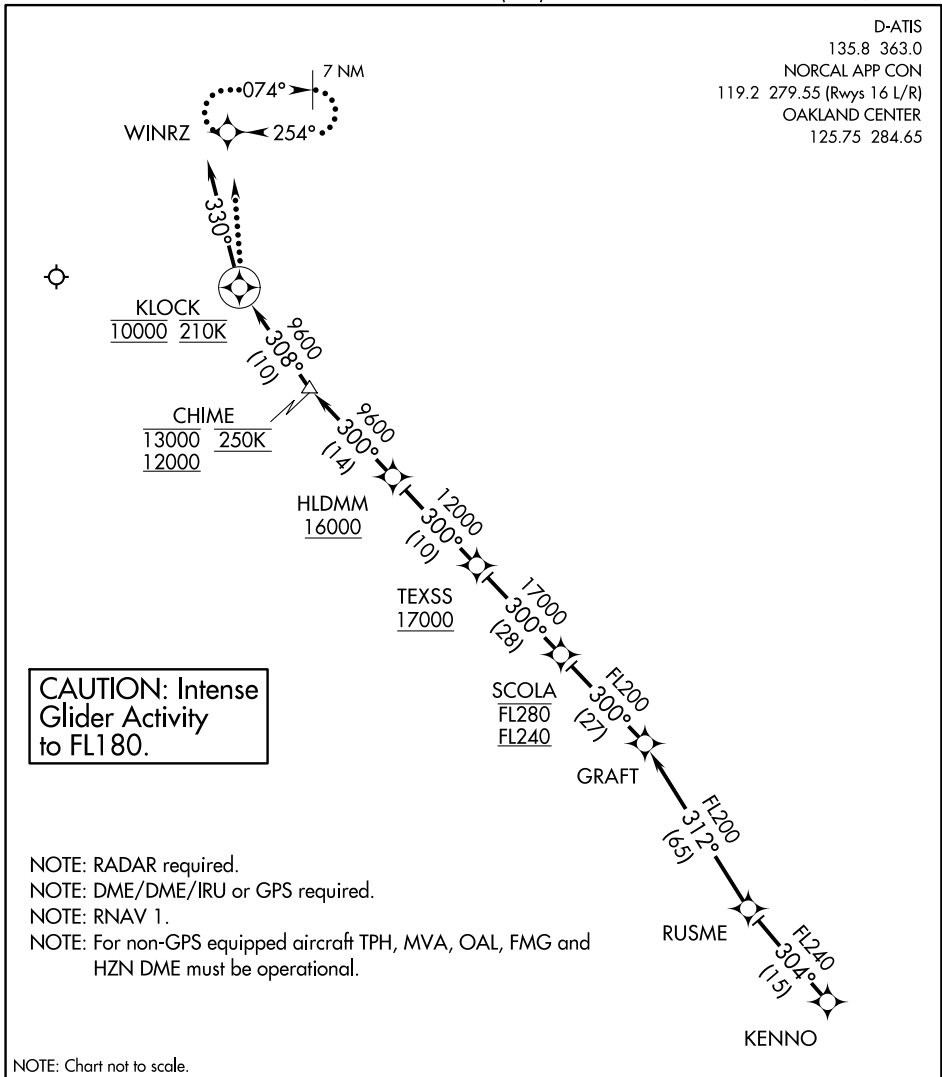
(KENNO.KENNO2) 17173

# KENNO TWO ARRIVAL (RNAV)

AL-346 (FAA)

RENO/TAHOE INTL (RNO)  
RENO, NEVADA

D-ATIS  
135.8 363.0  
NORCAL APP CON  
119.2 279.55 (Rwys 16 L/R)  
OAKLAND CENTER  
125.75 284.65



SW-4, 15 AUG 2019 to 12 SEP 2019

SW-4, 15 AUG 2019 to 12 SEP 2019

## ARRIVAL ROUTE DESCRIPTION

From KENNO on track 304° to RUSME, then as depicted to cross KLOCK at 10000' at 210K, then on heading 330°. Rwy 16L/16R expect RADAR vectors to final approach course.

### LOST COMMUNICATIONS:

At KLOCK, turn right direct to WINRZ and hold, maintain 10000'.

# KENNO TWO ARRIVAL (RNAV)

(KENNO.KENNO2) 31MAY12

RENO, NEVADA  
RENO/TAHOE INTL (RNO)