

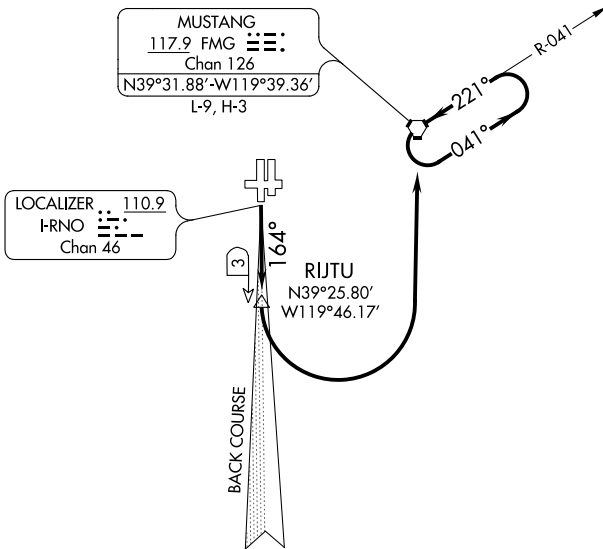
MUSTANG EIGHT DEPARTURE

AL-346 (FAA)

RENO/TAHOE INTL (RNO)
RENO, NEVADA

D-ATIS
135.8 363.0
CLNC DEL
124.9 370.85
CPDLC
GND CON
121.9 348.6
RENO TOWER
118.7 257.8
NORCAL DEP CON
119.2 279.55

**TOP ALTITUDE:
10000**



SW-4, 15 AUG 2019 to 12 SEP 2019

SW-4, 15 AUG 2019 to 12 SEP 2019

TAKEOFF MINIMUMS

Rwy 7: NA- obstacles

Rwys 25, 34L/34R: NA- ATC.

Rwy 16L: Standard with minimum climb of 740' per NM to 8000 or, 600-1¼ with minimum climb of 525' per NM to 8000.

Rwy 16R: Standard with minimum climb of 740' per NM to 8000 or, 600-1¼ with minimum climb of 525' per NM to 8000.

NOTE: DME required.

NOTE: Chart not to scale.



DEPARTURE ROUTE DESCRIPTION

TAKEOFF RUNWAYS 16L/R: Climb to 10000 or assigned altitude, via I-RNO south course to RIJTU/3 DME, then left turn direct FMG VORTAC. Climb in FMG holding pattern to depart FMG VORTAC at or above MEA/MCA for direction of flight. Expect clearance to requested altitude five minutes after departure.

MUSTANG EIGHT DEPARTURE