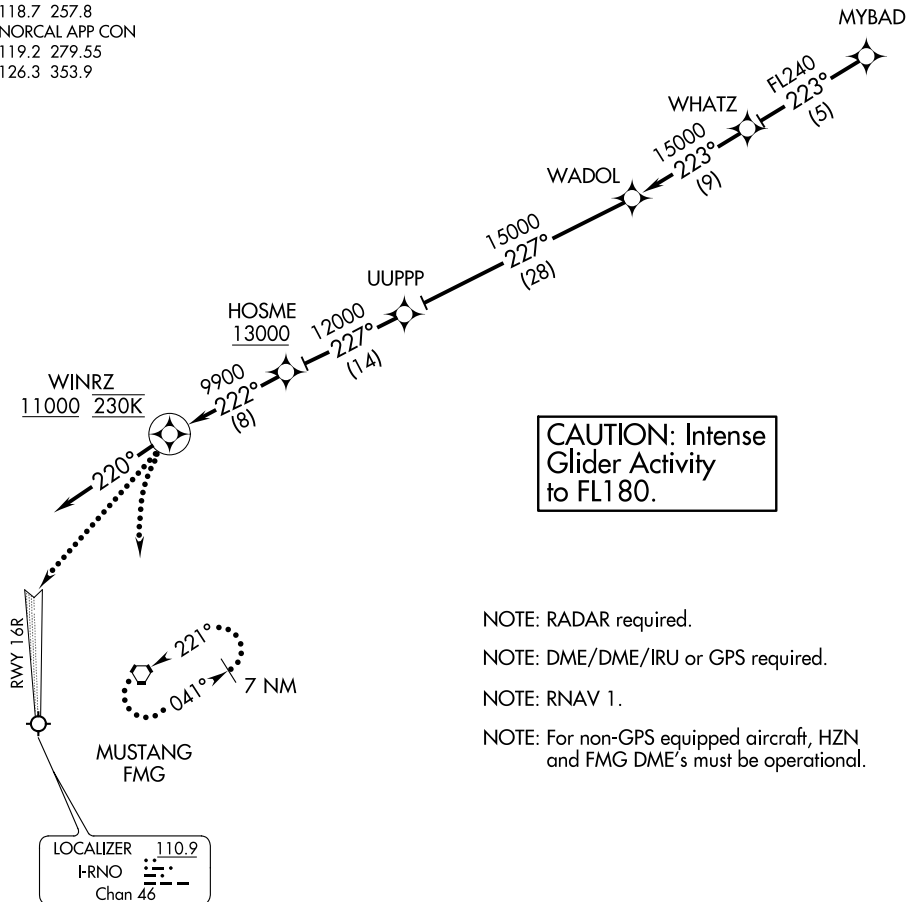


# MYBAD TWO ARRIVAL (RNAV)

AL-346 (FAA)

RENO/TAHOE INTL (R.NO)  
RENO, NEVADA

D-ATIS  
135.8 363.0  
RENO TOWER  
118.7 257.8  
NORCAL APP CON  
119.2 279.55  
126.3 353.9



NOTE: RADAR required.

NOTE: DME/DME/IRU or GPS required.

NOTE: RNAV 1.

NOTE: For non-GPS equipped aircraft, HZN and FMG DME's must be operational.

NOTE: Chart not to scale.

## ARRIVAL ROUTE DESCRIPTION

From MYBAD on track 223° to WHATZ, then as depicted to cross WINRZ at or above 11000 at 230 KTS, then on heading 220°. Rwy 16R/16L expect RADAR vectors to final approach course.

## LOST COMMUNICATIONS

At WINRZ, proceed inbound via RWY 16R ILS approach. If unable, climbing left turn to 12000 direct to FMG VORTAC and hold. Continue climb in hold to 12000.

# MYBAD TWO ARRIVAL (RNAV)