

PVINE THREE DEPARTURE (RNAV)

AL-346 (FAA)

RENO/TAHOE INTL (R.NO)
RENO, NEVADA

D-ATIS
135.8 363.0
CLNC DEL
124.9 370.85
CPDLC
GND CON
121.9 348.6
RENO TOWER
118.7 257.8
NORCAL DEP CON
126.3 353.9

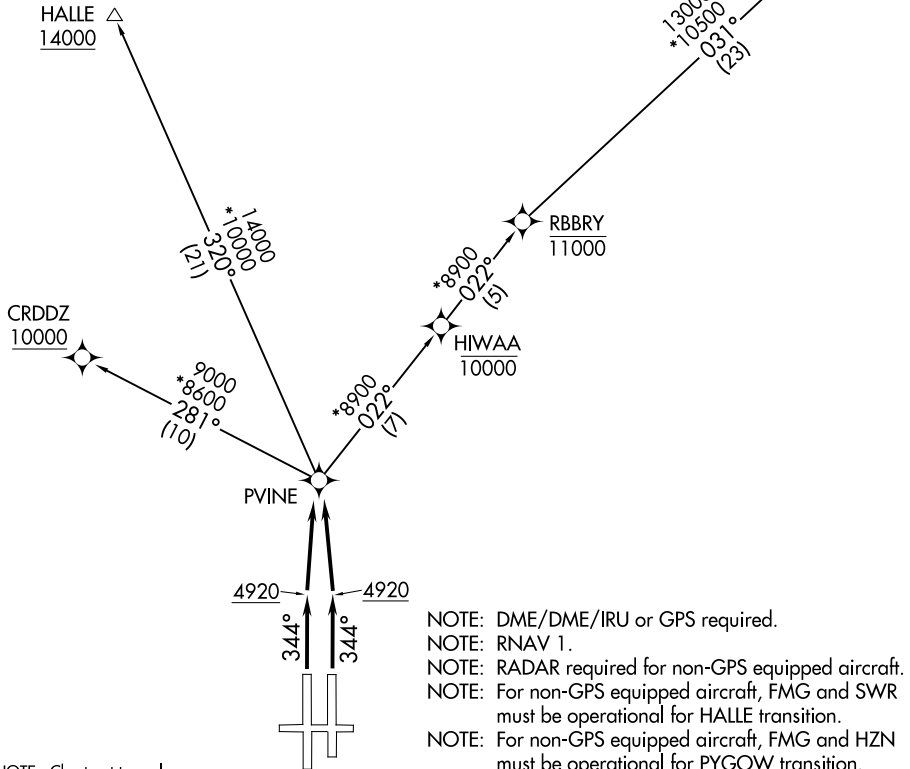
**TOP ALTITUDE:
FL190**

TAKEOFF MINIMUMS

Rwys 7, 25, 16L/R: NA - ATC.

Rwy 34L: Standard with minimum climb of 383' per NM to 12000.

Rwy 34R: 400-1½ with minimum climb of 383' per NM to 12000, or standard with minimum climb of 411' per NM to 4900, then minimum climb of 383' per NM to 12000.



- NOTE: DME/DME/IRU or GPS required.
- NOTE: RNAV 1.
- NOTE: RADAR required for non-GPS equipped aircraft.
- NOTE: For non-GPS equipped aircraft, FMG and SWR must be operational for HALLE transition.
- NOTE: For non-GPS equipped aircraft, FMG and HZN must be operational for PYGOW transition.

NOTE: Chart not to scale.

DEPARTURE ROUTE DESCRIPTION

TAKEOFF RUNWAYS 34L/R: Climb heading 344° to 4920, then direct PVINE, thence. . . .

. . . .Maintain FL190 or assigned altitude. Expect filed altitude 5 minutes after departure.

CRDDZ TRANSITION (PVINE3.CRDDZ)

HALLE TRANSITION (PVINE3.HALLE)

PYGOW TRANSITION (PVINE3.PYGOW)

SW-4, 15 AUG 2019 to 12 SEP 2019

SW-4, 15 AUG 2019 to 12 SEP 2019