

RENO NINE DEPARTURE

AL-346 (FAA)

RENO/TAHOE INTL (RNO)

RENO, NEVADA

TAKEOFF MINIMUMS

Rwy 7: NA- Obstacles.

Rwy 16L: Standard with minimum climb of 730' per NM to 10900, or 600-1¼ with minimum climb of 352' per NM to 10900.

Rwy 16R: Standard with minimum climb of 460' per NM to 10900, or 300-1 with minimum climb of 395' per NM to 10900.

Rwy 25: Standard with minimum climb of 500' per NM to 9700.

Rwys 34L/R: Standard with minimum climb of 480' per NM to 8700, or 500-1½ with minimum climb of 430' per NM to 8700.

**TOP ALTITUDE:
FL190**

D-ATIS	135.8	363.0
CLNC DEL	124.9	370.85
CPDLC		
GND CON	121.9	348.6
RENO TOWER	118.7	257.8

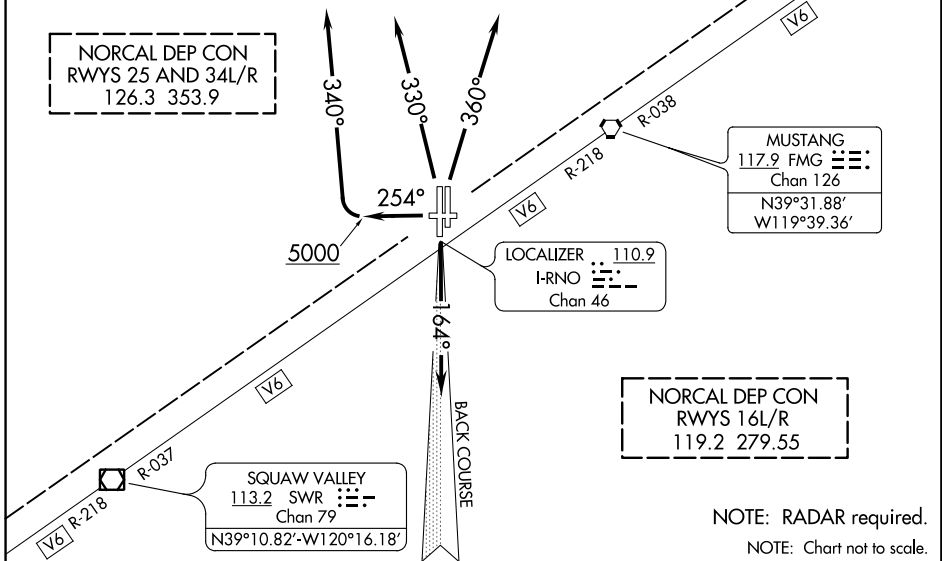
NORCAL DEP CON
RWYS 25 AND 34L/R
126.3 353.9

MUSTANG
117.9 FMG
Chan 126
N39°31.88'
W119°39.36'

LOCALIZER 110.9
I-RNO
Chan 46

NORCAL DEP CON
RWYS 16L/R
119.2 279.55

SQUAW VALLEY
113.2 SWR
Chan 79
N39°10.82'-W120°16.18'



SW-4, 15 AUG 2019 to 12 SEP 2019

SW-4, 15 AUG 2019 to 12 SEP 2019

DEPARTURE ROUTE DESCRIPTION

TAKEOFF RUNWAYS 16L/R: Climb on heading 164° and I-RNO localizer south course.

Thence. . .

TAKEOFF RUNWAY 25: Climb heading 254° to 5000 then climbing right turn heading 340°.

Thence. . .

TAKEOFF RUNWAYS 34L/R: Climb heading 330° CW 360° as assigned by ATC.

Thence. . .

. . . All aircraft maintain FL190 or assigned altitude. Expect clearance to requested altitude 5 minutes after departure. Expect RADAR vectors to assigned route/fix.

LOST COMMUNICATIONS: If not in contact with departure control within one minute after takeoff, maintain assigned heading until passing 10000, thence. . .

. . . **RUNWAYS 16L/R DEPARTURES:** Turn left direct FMG VORTAC, then via assigned route.

. . . **RUNWAYS 25 and 34L/R DEPARTURES:** Turn right direct FMG VORTAC, then via assigned route.

RENO NINE DEPARTURE