

APP CRS	Rwy Idg	9000
164°	TDZE	4415
	Apt Elev	4415

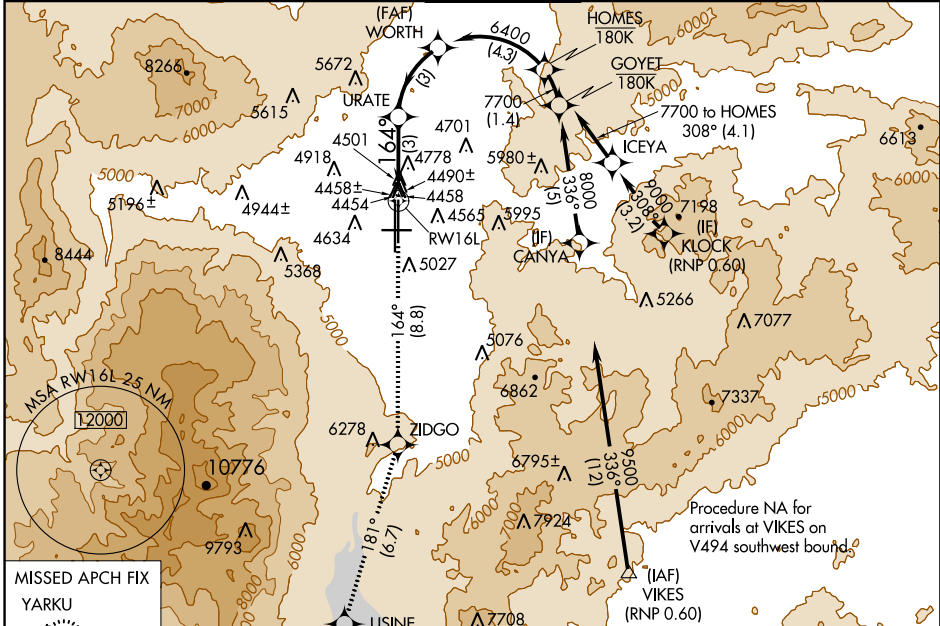
RNAV (RNP) Y RWY 16L

RENO/TAHOE INTL (RNO)

For uncompensated Baro-VNAV systems, procedure NA below -14°C (7°F) or above 44°C (111°F). Procedure NA at night.
 RF Required. GPS Required. *Missed approach requires a minimum climb of 252 feet per NM to 7200.

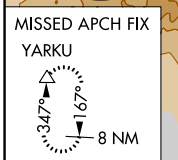
MISSED APPROACH: Climb to 13000 on track 164° to ZIDGO and on track 181° to USINE and on track 124° to YARKU and hold, continue climb-in-hold to 13000.

D-ATIS	NORCAL APP CON	RENO TOWER	GND CON	CLNC DEL	CPDLC
135.8 363.0	119.2 279.55 126.3 353.9	118.7 257.8	121.9 348.6	124.9 370.85	



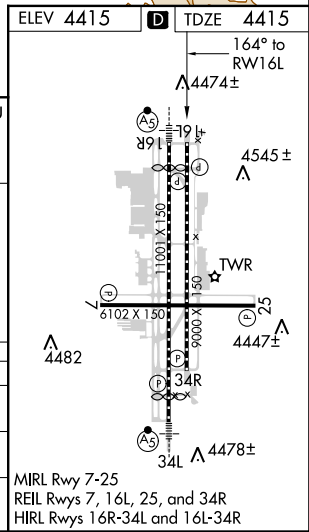
SW-4, 15 AUG 2019 to 12 SEP 2019

SW-4, 15 AUG 2019 to 12 SEP 2019



See planview for multiple IF locations.

HOMES	ZIDGO	USINE	YARKU
	tr 181°	tr 124°	
7700	6400	5445	
	tr 164°		
	4.3 NM	3 NM	3 NM
GP 3.00°			
TCH 75			
CATEGORY	A	B	C
RNP 0.12 DA*		4792-1½	377 (400-1½)
RNP 0.30 DA		5127-2½	712 (800-2½)



AUTHORIZATION REQUIRED

MIRL Rwy 7-25
 REIL Rwys 7, 16L, 25, and 34R
 HIRL Rwys 16R-34L and 16L-34R