


RNAV (RNP) Y RWY 16R

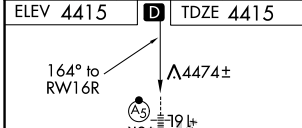
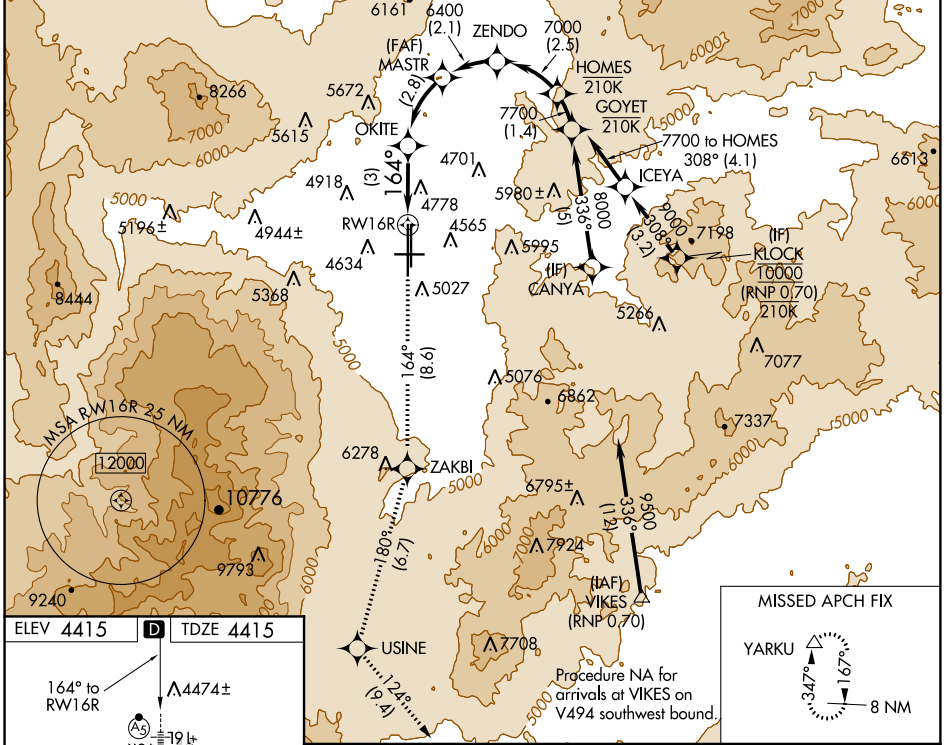
RENO/TAHOE INTL (RNO)

APP CRS	Rwy Idg	10001
164°	TDZE	4415
	Apt Elev	4415

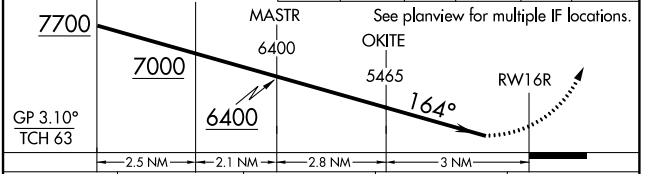
⚠ For uncompensated Baro-VNAV systems, procedure NA below -14°C (7°F) or above 36°C (98°F). For inoperative MALS/R, increase RNP 0.17 all Cats visibility to 1¼ and RNP 0.30 all Cats visibility to 2½. RF required. *Missed approach requires a minimum climb of 260 feet per NM to 7000.

MALS/R
 **MISSED APPROACH:** Climb to 13000 on track 164° to ZAKBI and on track 180° to USINE and on track 124° to YARKU and hold, continue climb-in-hold to 13000.

D-ATIS	NORCAL APP CON	RENO TOWER	GND CON	CLNC DEL	CPDLC
135.8 363.0	119.2 279.55 126.3 353.9	118.7 257.8	121.9 348.6	124.9 370.85	



VGSI and RNAV glidepath not coincident (VGSI Angle 3.06/TCH 77).	13000	ZAKBI	USINE	YARKU
	↑ tr 164°	✦	✦ tr 180°	△ tr 124°



CATEGORY	A	B	C	D
RNP 0.17 DA*		4817/40	402 (500-¾)	
RNP 0.30 DA		5132-1½	717 (800-1½)	

AUTHORIZATION REQUIRED

SW-4, 15 AUG 2019 to 12 SEP 2019

SW-4, 15 AUG 2019 to 12 SEP 2019