


RNAV (RNP) Z RWY 16R

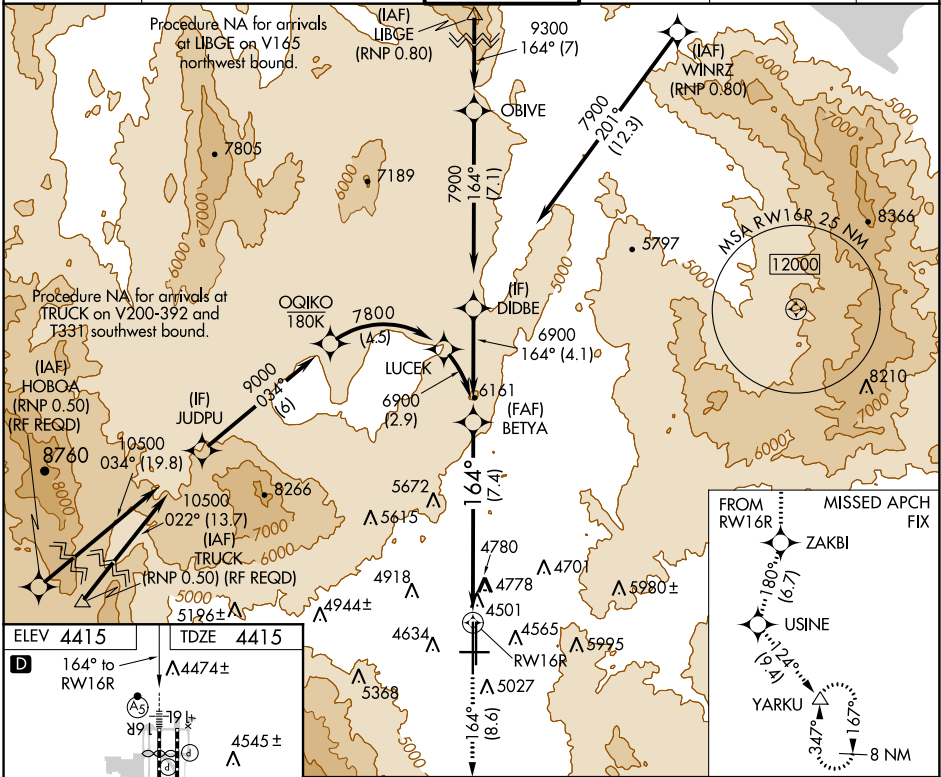
RENO/TAHOE INTL (RNO)

APP CRS	Rwy Idg	10001
164°	TDZE	4415
	Apt Elev	4415

⚠ For uncompensated Baro-VNAV systems, procedure NA below -16°C (4°F) or above 54°C (130°F). For inoperative MALS/R, increase RNP 0.17 all Cats visibility to 1½ and RNP 0.30 all Cats visibility to 2½. GPS required. *Missed approach requires a minimum climb of 260 feet per NM to 7000.

MALS/R
 MISSED APPROACH: Climb to 13000 on track 164° to ZAKBI and on track 180° to USINE and on track 124° to YARKU and hold, continue climb-in-hold to 13000.

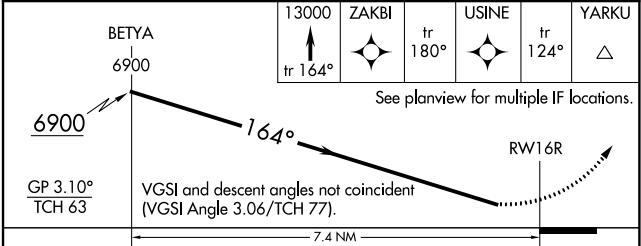
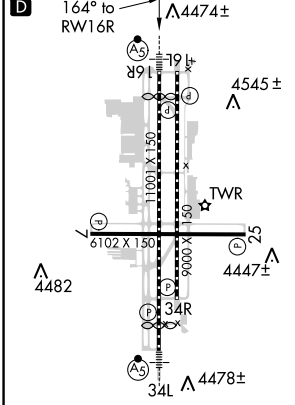
D-ATIS	NORCAL APP CON	RENO TOWER	GND CON	CLNC DEL	CPDLC
135.8 363.0	119.2 279.55 126.3 353.9	118.7 257.8	121.9 348.6	124.9 370.85	



SW-4, 15 AUG 2019 to 12 SEP 2019

SW-4, 15 AUG 2019 to 12 SEP 2019

ELEV	4415	TDZE	4415
------	------	------	------



MIRL Rwy 7-25
 REIL Rwy 7, 16L, 25, and 34R
 HIRL Rwy 16R-34L and 16L-34R

CATEGORY	A	B	C	D
RNP 0.17 DA*	4973-1⅜	558 (600-1⅜)		NA
RNP 0.30 DA	5142-1⅞	727 (800-1⅞)		NA

AUTHORIZATION REQUIRED