

RNAV (RNP) Z RWY 34R

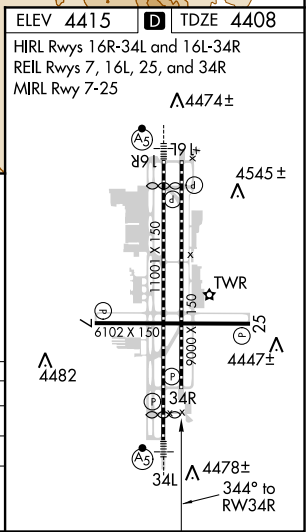
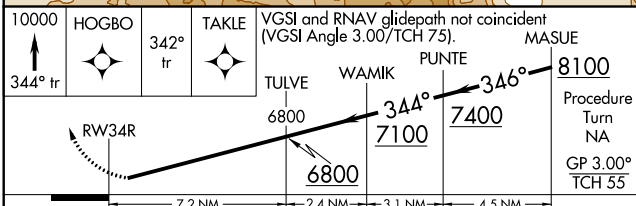
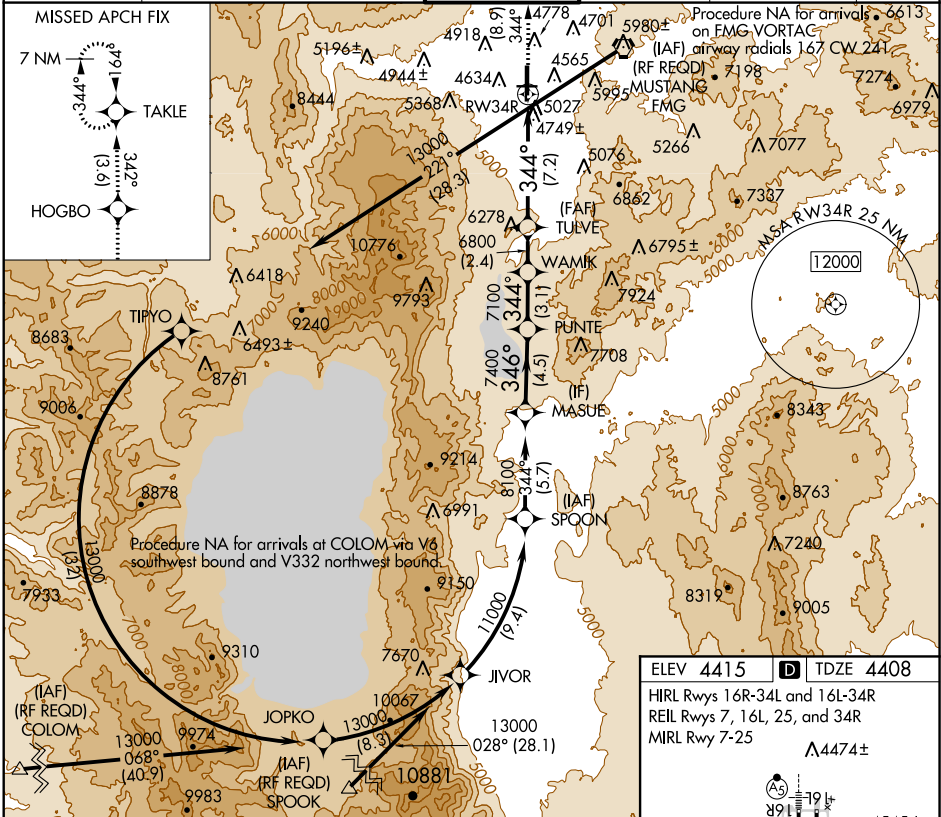
RENO/TAHOE INTL (RNO)

APP CRS 344°	Rwy Idg TDZE Apt Elev	9000 4408 4415
------------------------	-----------------------------	---

NA GPS required. For uncompensated Baro-VNAV systems, procedure NA below -13°C (8°F) or above 40°C (105°F).
 -15°C

MISSED APPROACH: Climb to 10000 via 344° track to HOGBO and 342° track to TAKLE and hold, continue climb-in-hold to 10000.

D-ATIS 135.8 363.0	NORCAL APP CON 119.2 279.55 126.3 353.9	RENO TOWER 118.7 257.8	GND CON 121.9 348.6	CLNC DEL 124.9 370.85	CPDLC
------------------------------	---	----------------------------------	-------------------------------	---------------------------------	-------



CATEGORY	A	B	C	D
RNP 0.15 DA		5173-2¾	765 (800-2¾)	
RNP 0.30 DA		5344-4	936 (1000-4)	

AUTHORIZATION REQUIRED

SW-4, 15 AUG 2019 to 12 SEP 2019

SW-4, 15 AUG 2019 to 12 SEP 2019