

WAAS CH <b>72909</b> W16A	APP CRS <b>164°</b>	Rwy Idg TDZE <b>4415</b> Apt Elev <b>4415</b>
---------------------------------	------------------------	---

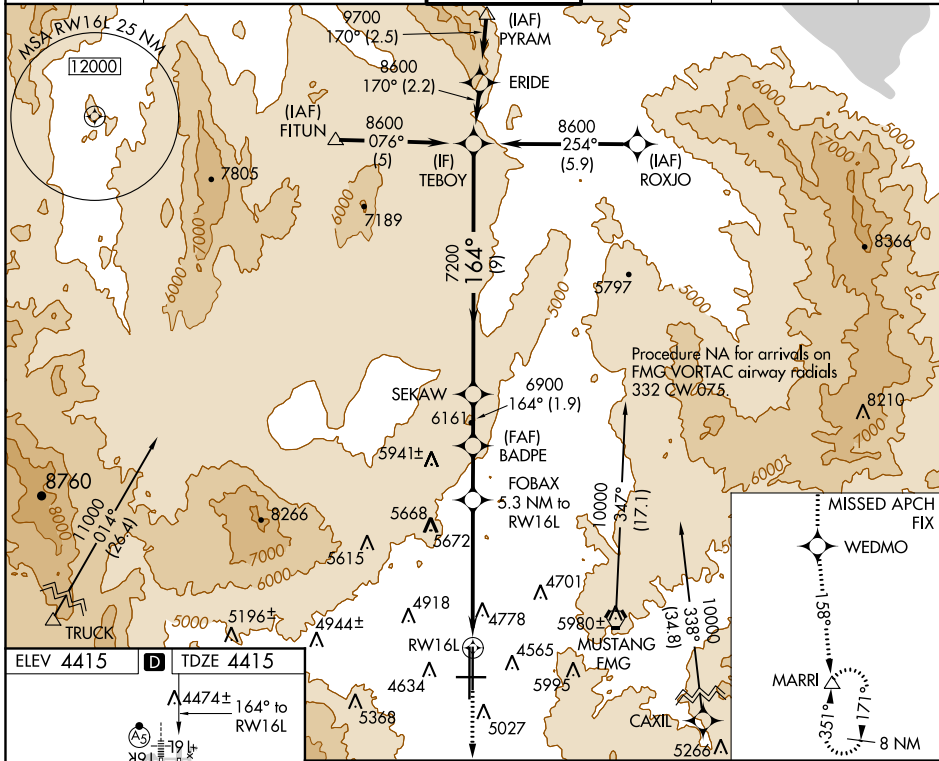
# RNAV (GPS) X RWY 16L

RENO/TAHOE INTL (RNO)

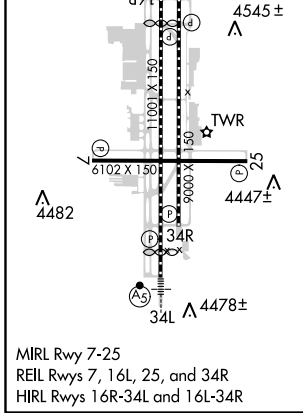
**V** DME/DME RNP-0.3 NA.  
**A** Rwy 16L helicopter visibility reduction below 3/4 SM NA.  
**B** -15°C Circling Rwy 7 NA at night.

MISSED APPROACH: Climb to 13000 direct WEDMO and on track 158° to MARRI and hold.

D-ATIS <b>135.8 363.0</b>	NORCAL APP CON <b>119.2 279.55 126.3 353.9</b>	RENO TOWER <b>118.7 257.8</b>	GND CON <b>121.9 348.6</b>	CLNC DEL <b>124.9 370.85</b>	CPDLC
------------------------------	---	----------------------------------	-------------------------------	---------------------------------	-------



ELEV 4415	<b>D</b>	TDZE 4415
-----------	----------	-----------



VGSI and RNAV glidepath not coincident (VGSI Angle 3.00/TCH 75).

TEBOY	SEKAW	BADPE	FOBAX	MARRI
8600	7200	6900	5.3 NM to RWY 16L	8 NM
GP 3.10° TCH 55		*6240	*3.9 NM to RWY 16L	
				*LNNAV only.
CATEGORY	A	B	C	D
LPV DA	5220-2 <sup>3</sup> / <sub>4</sub> 805 (900-2 <sup>3</sup> / <sub>4</sub> )			
LNNAV MDA	5720-1 <sup>1</sup> / <sub>4</sub> 1305 (1400-1 <sup>1</sup> / <sub>4</sub> )	5720-1 <sup>1</sup> / <sub>2</sub> 1305 (1400-1 <sup>1</sup> / <sub>2</sub> )	5720-3	1305 (1400-3)
CIRCLING	5720-1 <sup>1</sup> / <sub>4</sub> 1305 (1400-1 <sup>1</sup> / <sub>4</sub> )	5720-1 <sup>1</sup> / <sub>2</sub> 1305 (1400-1 <sup>1</sup> / <sub>2</sub> )	5720-3	1305 (1400-3)

SW-4, 15 AUG 2019 to 12 SEP 2019

SW-4, 15 AUG 2019 to 12 SEP 2019