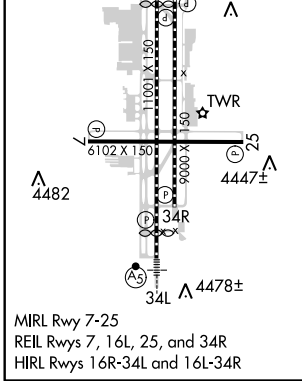
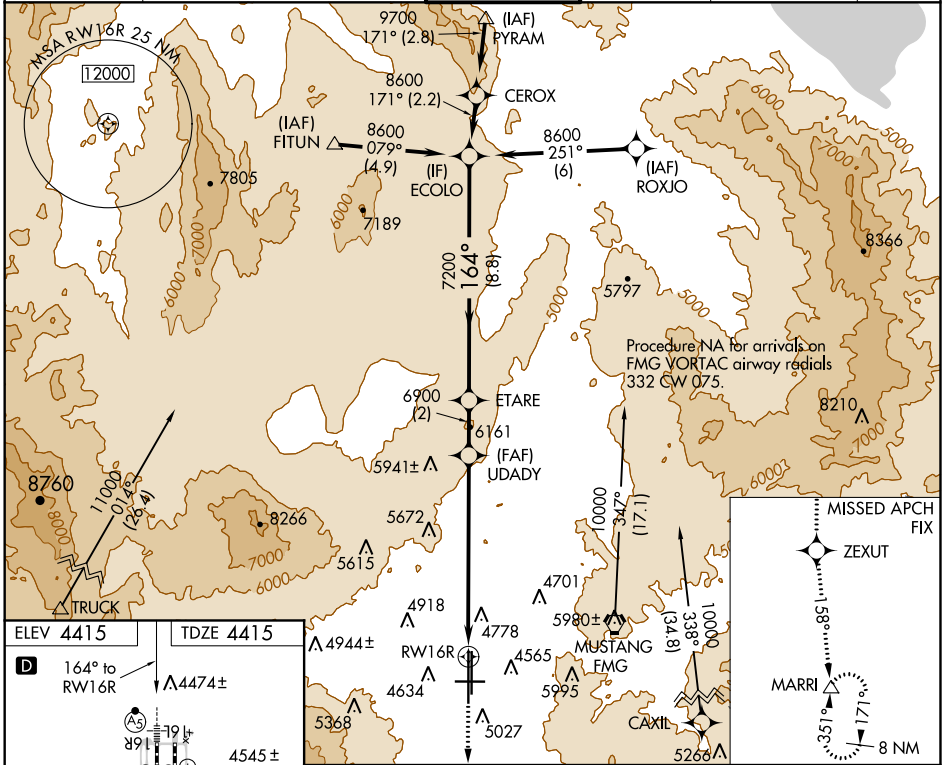


WAAS CH <b>78309</b> <b>W16B</b>	APP CRS <b>164°</b>	Rwy Idg TDZE <b>4415</b> Apt Elev <b>4415</b>
----------------------------------------	------------------------	-----------------------------------------------------

# RNAV (GPS) X RWY 16R

RENO/TAHOE INTL (RNO)

RNP APCH.		RENO TOWER <b>118.7 257.8</b>		GND CON <b>121.9 348.6</b>	CLNC DEL <b>124.9 370.85</b>	CPDLC
Inoperative table does not apply to LNAV all Cats. For inoperative MALSR increase LPV all Cats visibility to 2 3/4. -15°C				MALSR MISSED APPROACH: Climb to 13000 direct ZEXUT and on track 158° to MARRI and hold.		



VGSi and descent angles not coincident (VGSi Angle 3.06/TCH 77).			
ECOLO	ETARE	UDADY	RWY 16R
8600	7200	6900	
GP 3.10°		TCH 63	
8.8 NM		2 NM	7.2 NM
CATEGORY	A	B	C
LPV DA	5239-2 1/4 824 (900-2 1/4)		
LNAV MDA	6200/60 1785 (1800-1 1/4)	6200-1 1/2 1785 (1800-1 1/2)	6200-3 1785 (1800-3)

SW-4, 15 AUG 2019 to 12 SEP 2019

SW-4, 15 AUG 2019 to 12 SEP 2019