

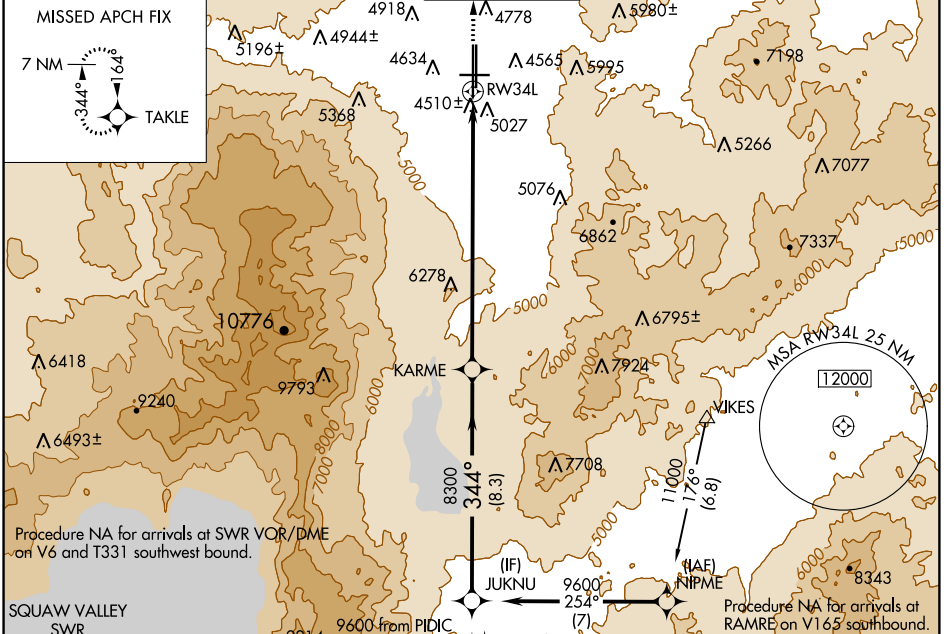
WAAS CH 82609 W34A	APP CRS 344°	Rwy Idg 10002 TDZE 4410 Apt Elev 4415
--	------------------------	--

RNAV (GPS) Y RWY 34L

RENO/TAHOE INTL (RNO)

DME/DME RNP-0.3 NA. -15°C For inoperative MALS R increase LPV all Cats visibility 1/2 mile.	MALS R	MISSED APPROACH: Climb to 10000 direct TAKLE and hold, continue climb-in-hold to 10000.
--	--------	---

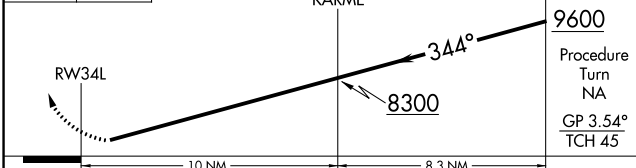
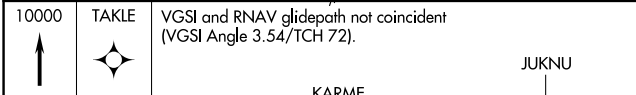
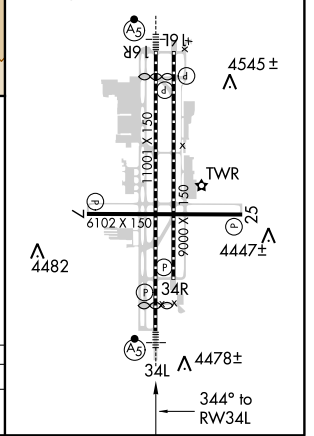
D-ATIS 135.8 363.0	NORCAL APP CON 119.2 279.55 126.3 353.9	RENO TOWER 118.7 257.8	GND CON 121.9 348.6	CLNC DEL 124.9 370.85	CPDLC
------------------------------	---	----------------------------------	-------------------------------	---------------------------------	-------



SW-4, 15 AUG 2019 to 12 SEP 2019

SW-4, 15 AUG 2019 to 12 SEP 2019

ELEV 4415	TDZE 4410
HIRL Rwys 16R-34L and 16L-34R	
REIL Rwys 7, 16L, 25, and 34R	
MIRL Rwy 7-25	



CATEGORY	A	B	C	D
LPV DA	5018-1¼ 608 (700-1¼)			NA