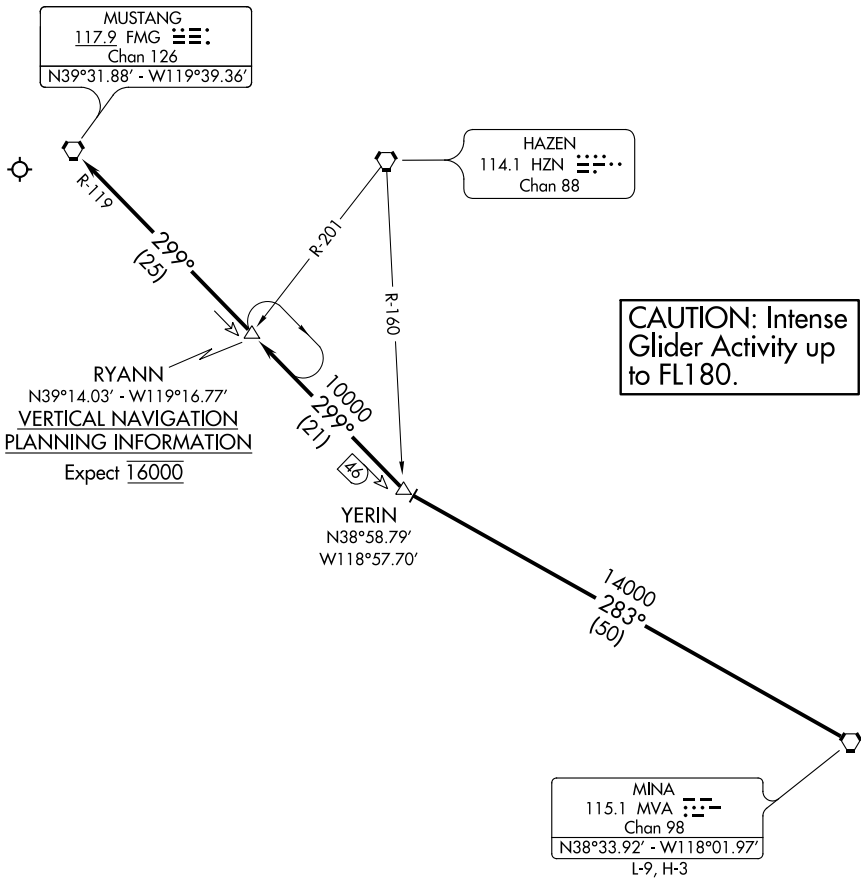


NORCAL APP CON
 119.2 279.55
 126.3 353.9
 D-ATIS
 135.8 363.0



SW-4, 15 AUG 2019 to 12 SEP 2019

SW-4, 15 AUG 2019 to 12 SEP 2019

- NOTE: For Runway 16 only.
- NOTE: RADAR Required.
- NOTE: Chart not to scale.

ARRIVAL ROUTE DESCRIPTION

RUNWAY 16: From over MVA VORTAC via MVA R-283 to YERIN INT. Thence via FMG R-119 to FMG VORTAC. Expect RADAR vectors to Runway 16.