

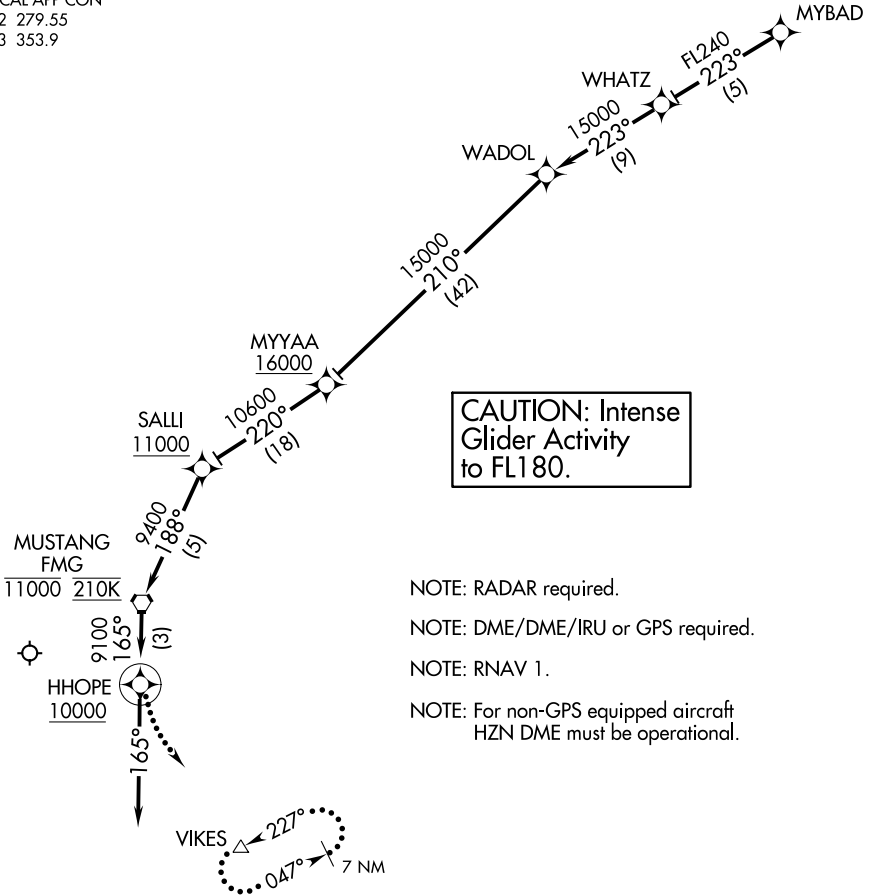
(MYBAD.WADOL2) 17173

# WADOL TWO ARRIVAL (RNAV)

AL-346 (FAA)

RENO/TAHOE INTL (RNO)  
RENO, NEVADA

D-ATIS  
135.8 363.0  
RENO TOWER  
118.7 257.8  
NORCAL APP CON  
119.2 279.55  
126.3 353.9



**CAUTION: Intense Glider Activity to FL180.**

- NOTE: RADAR required.
- NOTE: DME/DME/IRU or GPS required.
- NOTE: RNAV 1.
- NOTE: For non-GPS equipped aircraft HZN DME must be operational.

NOTE: Chart not to scale.

## ARRIVAL ROUTE DESCRIPTION

From MYBAD on track 223° to WHATZ, then as depicted to cross HHOPE at or above 10000, then on heading 165°. Rwy 34L/34R expect RADAR vectors to final approach course.

### LOST COMMUNICATIONS

At HHOPE, climbing left turn to 12000 direct to VIKES and hold.

# WADOL TWO ARRIVAL (RNAV)

(MYBAD.WADOL2) 20OCT11

RENO, NEVADA  
RENO/TAHOE INTL (RNO)

SW-4, 15 AUG 2019 to 12 SEP 2019

SW-4, 15 AUG 2019 to 12 SEP 2019