


WAGGE SIX DEPARTURE


AL-346 (FAA)

RENO/TAHOE INTL (R.NO)
RENO, NEVADA

D-ATIS
135.8 363.0
CLNC DEL
124.9 370.85
CPDLC
GND CON
121.9 348.6
RENO TOWER
118.7 257.8
NORCAL DEP CON
119.2 279.55

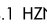
**TOP ALTITUDE:
FL190**

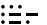
LOVELOCK
116.5 LLC 
Chan 112
N40°07.52'-W118°34.66'
L-9-11, H-3

MUSTANG
117.9 FMG 
Chan 126
N39°31.88'-W119°39.36'
L-9, H-3

MINIMUM CROSSING
ALTITUDES AT FMG
FOR MUSTANG TRANSITION
V28-113 South: 10500
V6 Southwest: 12000
V165 South: 10000

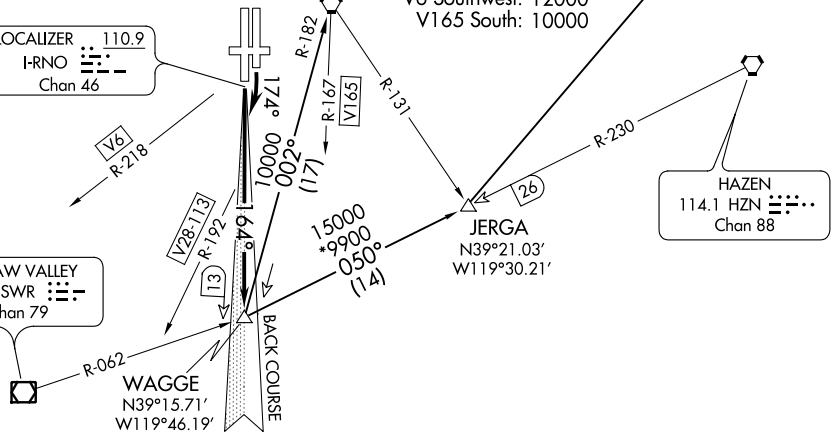
LOCALIZER 110.9
I-RNO 
Chan 46

HAZEN
114.1 HZN 
Chan 88

SQUAW VALLEY
113.2 SWR 
Chan 79

WAGGE
N39°15.71'
W119°46.19'

JERGA
N39°21.03'
W119°30.21'



SW-4, 15 AUG 2019 to 12 SEP 2019

SW-4, 15 AUG 2019 to 12 SEP 2019

TAKEOFF MINIMUMS

Rwys 7, 25, 34L/R: NA- ATC.
Rwy 16R: Standard with minimum climb of 370' per NM to 9200.
Rwy 16L: Standard with minimum climb of 740' per NM to 8000.

NOTE: Chart not to scale.

DEPARTURE ROUTE DESCRIPTION

TAKEOFF RUNWAY 16R: Climb on I-RNO south course to WAGGE INT, thence via (transition) or assigned route.

TAKEOFF RUNWAY 16L: Climbing right turn heading 174° to intercept I-RNO south course to WAGGE INT, thence via (transition) or assigned route.

All aircraft maintain FL190 or assigned altitude. Expect clearance to requested altitude 5 minutes after departure.

LOVELOCK TRANSITION (WAGGE6.LLC): From over WAGGE INT via HZN R-230 to JERGA INT then via LLC R-206 to LLC VORTAC.

MUSTANG TRANSITION (WAGGE6.FMG): From over WAGGE INT via FMG R-182 to FMG VORTAC.