

ZEFFR SIX DEPARTURE (RNAV)

AL-346 (FAA)

RENO/TAHOE INTL (RNO)
RENO, NEVADA

D-ATIS
135.8 363.0
CLNC DEL
124.9 370.85
CPDLC
GND CON
121.9 348.6
RENO TOWER
118.7 257.8
NORCAL DEP CON
119.2 279.55

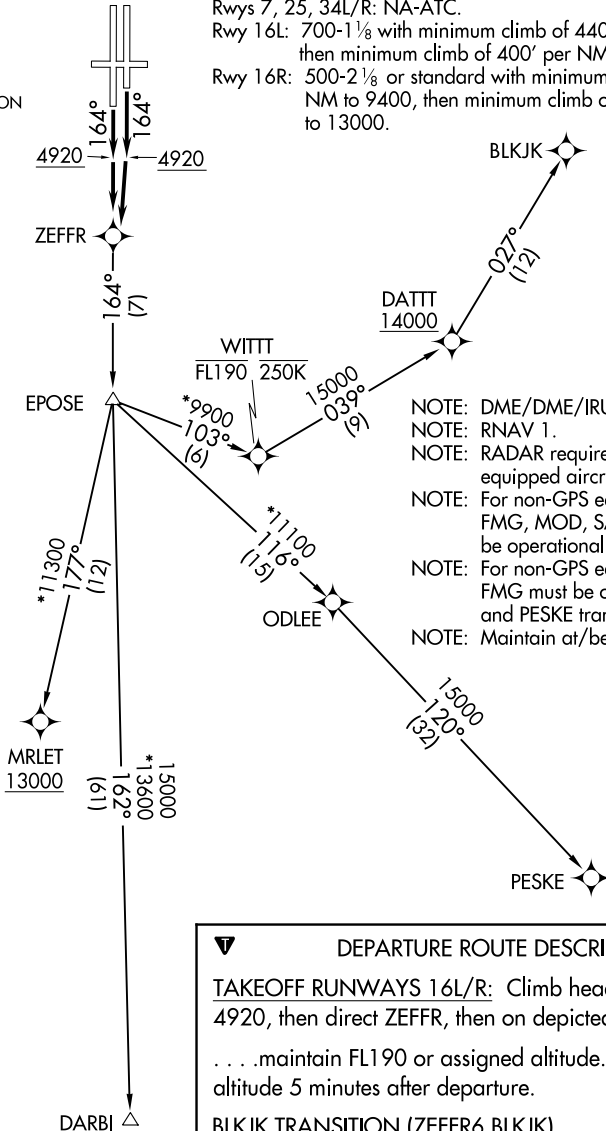
**TOP ALTITUDE:
FL190**

TAKEOFF MINIMUMS

Rwys 7, 25, 34L/R: NA-ATC.

Rwy 16L: 700-1 1/8 with minimum climb of 440' per NM to 9400, then minimum climb of 400' per NM to 13000.

Rwy 16R: 500-2 1/8 or standard with minimum climb of 440' per NM to 9400, then minimum climb of 400' per NM to 13000.



- NOTE: DME/DME/IRU or GPS required.
- NOTE: RNAV 1.
- NOTE: RADAR required for non-GPS equipped aircraft.
- NOTE: For non-GPS equipped aircraft, FMG, MOD, SAC, and SWR must be operational for DARBI transition.
- NOTE: For non-GPS equipped aircraft FMG must be operational for BLKJK and PESKE transitions.
- NOTE: Maintain at/below 250K until WITTT.

DEPARTURE ROUTE DESCRIPTION

TAKEOFF RUNWAYS 16L/R: Climb heading 164° to 4920, then direct ZEFFR, then on depicted route, thence maintain FL190 or assigned altitude. Expect filed altitude 5 minutes after departure.

BLKJK TRANSITION (ZEFFR6.BLKJK)

DARBI TRANSITION (ZEFFR6.DARBI)

MRLET TRANSITION (ZEFFR6.MRLET)

PESKE TRANSITION (ZEFFR6.PESKE)

NOTE: Chart not to scale.

SW-4, 15 AUG 2019 to 12 SEP 2019

SW-4, 15 AUG 2019 to 12 SEP 2019