

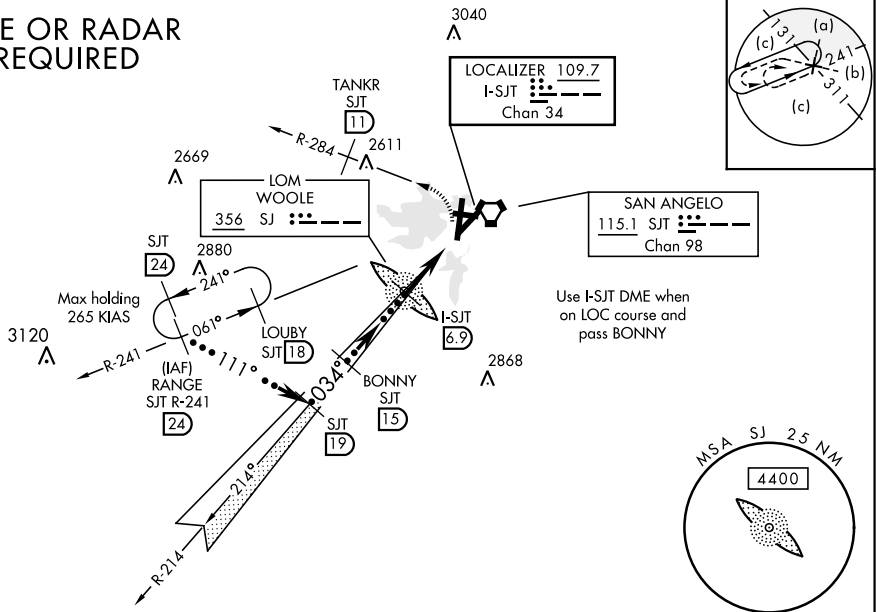
# HI-ILS RWY 3

LOC I-SJT <b>109.7</b> Chan <b>34</b>	APCH CRS <b>034°</b>	Rwy ldg TDZE <b>1917</b> Arpt Elev <b>1919</b>	JAL-367 [USAF]	SAN ANGELO REGIONAL/MATHIS FIELD (KSJT)
---	-------------------------	--	----------------	---

<p>▼ * When ALS inop, increase vis CAT CDE ½ mile. ** When ALS inop, increase vis CAT CDE ½ mile. *** CAT E circling not authorized W of Rwy 18-36.</p>	<p>MALS R A5</p>	<p>MISSED APPROACH: Climb to 4000 then climbing left turn to 4400 via SJT VORTAC R-284 to TANKR 11 DME</p>
---	----------------------	--

ATIS <b>128.45 319.0</b>	SAN ANGELO APP CON <b>125.35 354.1</b>	MATHIS TOWER ★ <b>118.3</b> (CTAF) <b>284.7</b>	GND CON <b>121.9 348.6</b>	ASR
-----------------------------	---	--	-------------------------------	-----

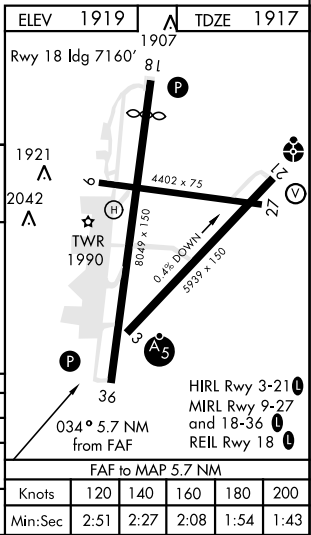
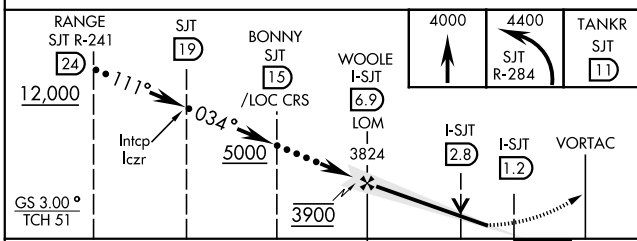
## DME OR RADAR REQUIRED



SC-3, 15 AUG 2019 to 12 SEP 2019

SC-3, 15 AUG 2019 to 12 SEP 2019

### EMERG SAFE ALT 100 NM 5100



CATEGORY	C	D	E
S-ILS 3 *	2117-½	200	(200-½)
S-LOC 3 **	2420-1	503 (600-1)	2420-1¼ 503 (600-1¼)
CIRCLING ***	2460-1½ 543 (600-1½)	2480-2 563 (600-2)	2640-2½ 721 (800-2½)

FAF to MAP 5.7 NM					
Knots	120	140	160	180	200
Min:Sec	2:51	2:27	2:08	1:54	1:43

# HI-ILS RWY 3