

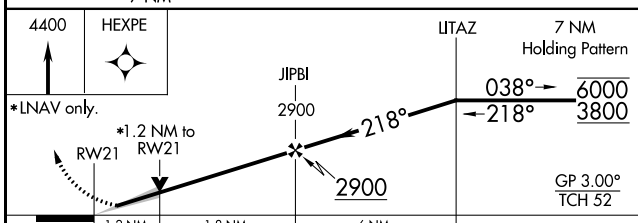
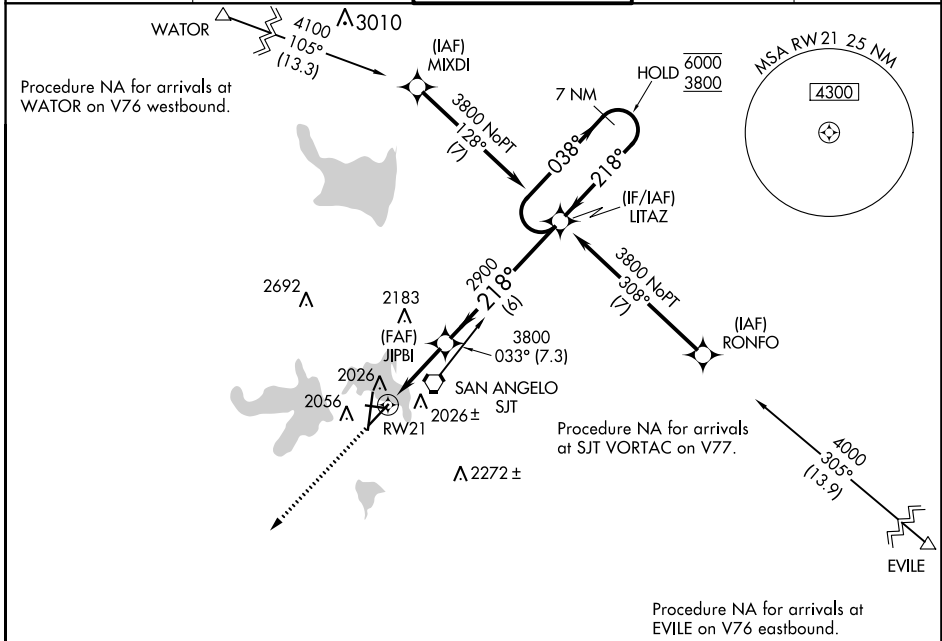
WAAS CH <b>81817</b> <b>W21A</b>	APP CRS <b>218°</b>	Rwy Idg TDZE Apt Elev	<b>5939</b> <b>1906</b> <b>1919</b>
--	------------------------	-----------------------------	---

# RNAV (GPS) RWY 21

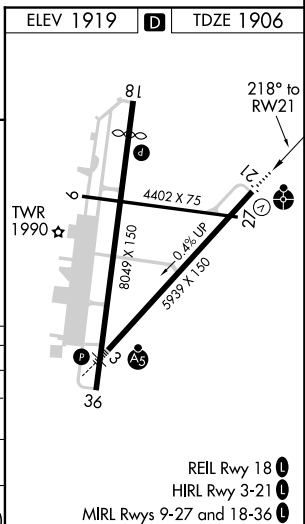
SAN ANGELO RGNL/MATHIS FIELD (SJT)

RNP APCH. ⚠ For uncompensated Baro-VNAV systems, LNAV/VNAV NA below -8°C or above 54°C. ⚠ Circling NA for Cat E west of Rwy 18-36. Inop table does not apply to LPV. For inop ALS, increase LNAV/VNAV Cat A/B/E visibility to 1 SM; increase LNAV Cat E visibility to 1¼ SM.	ODALS 	MISSED APPROACH: Climb to 4400 direct HEXPE and hold.
--	-----------	--

ATIS <b>128.45 319.0</b>	SAN ANGELO APP CON * <b>125.35 354.1</b>	MATHIS TOWER * <b>118.3 (CTAF) 284.7</b>	GND CON <b>121.9 348.6</b>	UNICOM <b>122.95</b>
-----------------------------	---	---	-------------------------------	-------------------------



CATEGORY	A	B	C	D	E
LPV DA	2106-¾		200 (200-¾)		
LNAV/VNAV DA	2250-7/8		344 (400-7/8)		
LNAV MDA	2340-¾	434 (500-¾)	2340-1/8	434 (500-1/8)	
<b>C</b> CIRCLING	2360-1 441 (500-1)	2380-1 461 (500-1)	2500-1½ 581 (600-1½)	2700-2½ 781 (800-2½)	2700-2¾ 781 (800-2¾)



SC-3, 15 AUG 2019 to 12 SEP 2019

SC-3, 15 AUG 2019 to 12 SEP 2019