

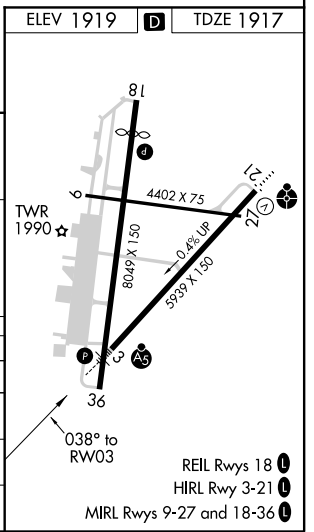
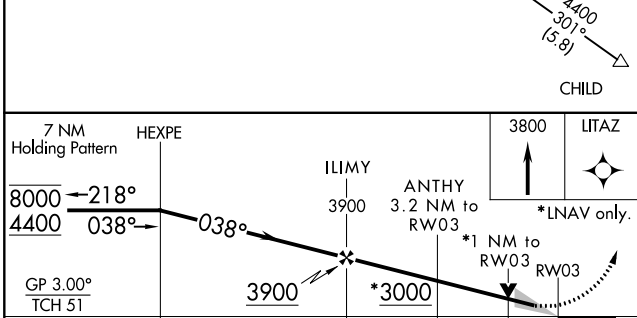
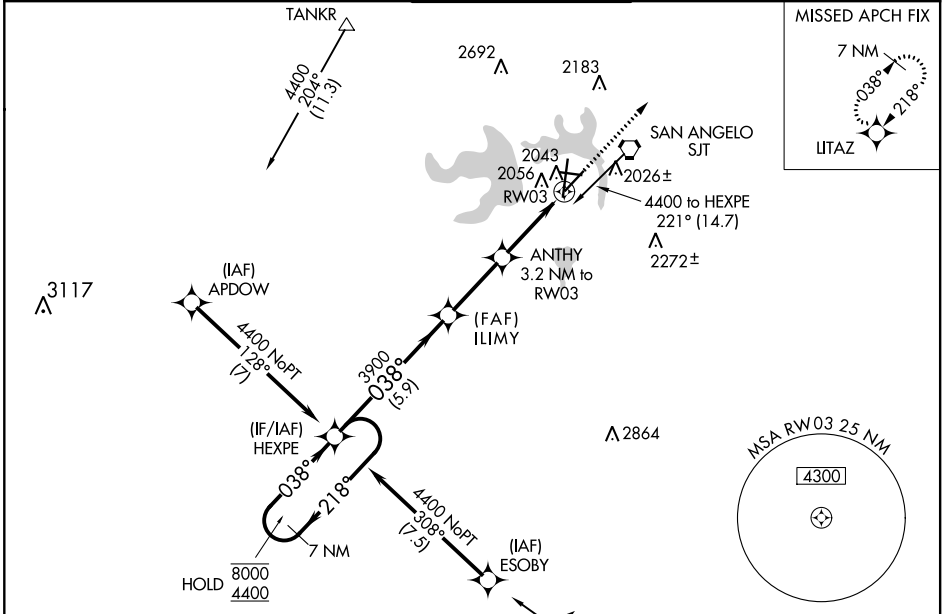
WAAS CH 77517 W03A	APP CRS 038°	Rwy Idg TDZE Apt Elev	5939 1917 1919
--	------------------------	-----------------------------	---

RNAV (GPS) RWY 3

SAN ANGELO RGNL/MATHIS FIELD(SJT)

RNP APCH	For uncompensated Baro-VNAV systems, LNAV/VNAV NA below -8°C or above 54°C. For inop ALS, increase LPV Cat E visibility to RVR 4000, and LNAV/VNAV Cat E and LNAV Cat E visibility to RVR 6000. Circling NA for Cat E west of Rwy 18-36. # RVR 1800 authorized with use of FD or AP or HUD to DA.	MALSR 	MISSED APPROACH: Climb to 3800 direct LITAZ and hold.
----------	---	-----------	--

ATIS 128.45 319.0	SAN ANGELO APP CON * 125.35 354.1	MATHIS TOWER * 118.3(CTAF) 284.7	GND CON 121.9 348.6	UNICOM 122.95
-----------------------------	---	--	-------------------------------	-------------------------



ELEV 1919	TDZE 1917				
7 NM Holding Pattern	HEXPE				
8000	4400				
GP 3.00°	TCH 51				
CATEGORY	A	B	C	D	E
LPV DA #	2117/24		200 (200-½)		
LNAV/VNAV DA	2296/35		379 (400-⅝)		
LNAV MDA	2300/24		2300/35 383 (400-⅝)		
CIRCLING	2360-1 441 (500-1)	2380-1 461 (500-1)	2500-1½ 581 (600-1½)	2700-2½ 781 (800-2½)	2700-2¾ 781 (800-2¾)

SC-3, 15 AUG 2019 to 12 SEP 2019

SC-3, 15 AUG 2019 to 12 SEP 2019