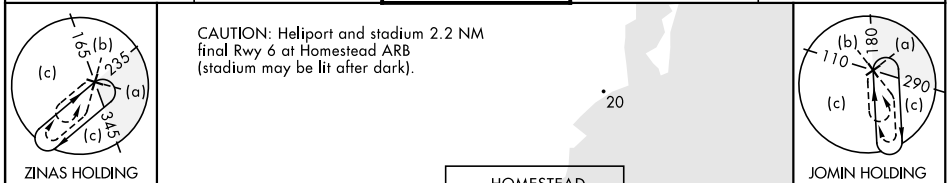


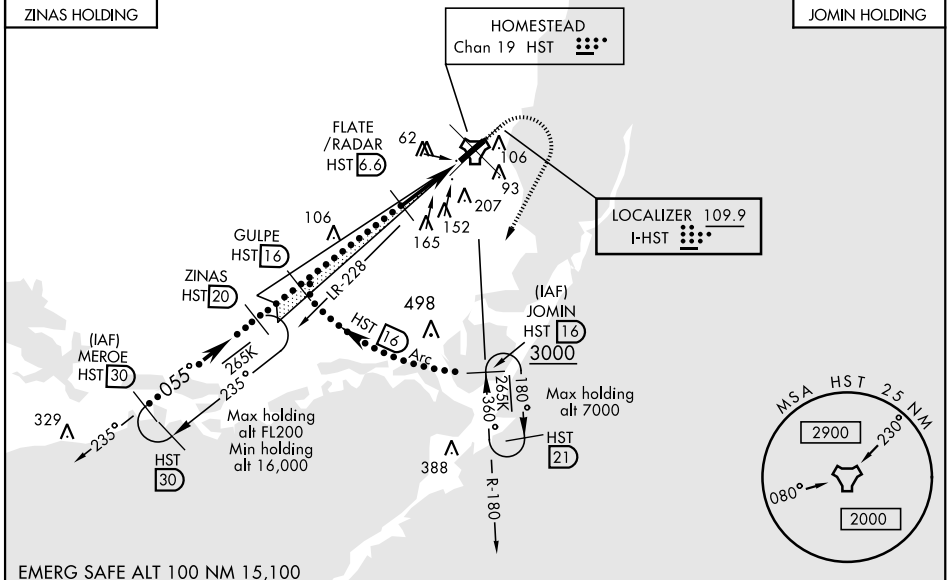
HI-ILS or LOC Y RWY 6

LOC I-HST 109.9	APCH CRS 055°	Rwy ldg THRE Arpt Elev 11,201 5 6	JAL-494 [USAF]	HOMESTEAD ARB (KHST)
▼ * When ALS inop, increase CAT CDE RVR to 40, vis to ¾ mile. ** When ALS inop, increase CAT CDE vis to 1½ miles. *** Circling NA NW of Rwy 06-24.			ALSF-1 	MISSED APPROACH: Climb to 800 then climbing right turn to 3000 intercept HST TACAN R-180 to JOMIN and hold as published.

ATIS ★ 132.275 269.9	HOMESTEAD APP CON 123.8 257.675	HOMESTEAD TOWER 133.45 279.55	GND CON 121.75 275.8	CLNC DEL 121.75 275.8
--------------------------------	---	---	--------------------------------	---------------------------------



CAUTION: Heliport and stadium 2.2 NM final Rwy 6 at Homestead ARB (stadium may be lit after dark).



SE-3, 15 AUG 2019 to 12 SEP 2019

SE-3, 15 AUG 2019 to 12 SEP 2019

MEROE (HST 30)	ZINAS (HST 20)	GULPE (HST 16)	FLATE/RADAR (HST 6.6)	JOMIN (HST 16)	ELEV 6	THRE 5
16,000				800	HIRL Rwy 6-24	
3000				3000	TWR 191	
GS 2.50° TCH 54				1500	TACAN	
5 NM				2.7	CODMA (HST 1.6)	
C				0.4 NM	P	
CATEGORY	C		D		E	
S-ILS 6 *	205/24		200 (200-½)			
S-LOC 6 **	460/45		455 (500-7%)			
*** CIRCLING	520-1½ 514 (600-1½)		580-2 574 (600-2)		780-2¾ 774 (800-2¾)	
FAF to MAP 5.0 NM						
Knots		120	140	160	180	200
Min:Sec		2:30	2:09	1:53	1:40	1:30

HI-ILS or LOC Y RWY 6