

HI-TACAN Y RWY 6

TACAN HST Chan 19	APCH CRS 056°	Rwy Idg 11,201 THRE 5 Arprt Elev 6
----------------------	------------------	--

JAL-494 [USAF]

HOMESTEAD ARB (KHST)

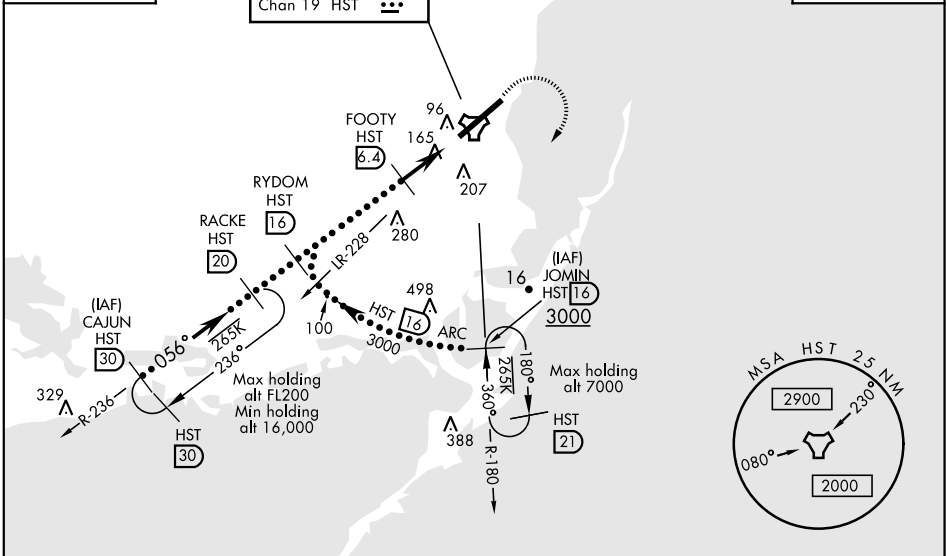
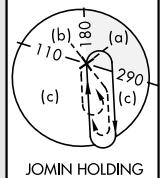
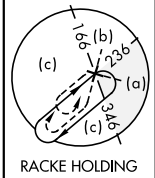
▼ * When ALS inop, increase CAT CDE vis to 1½ miles.
 ** Circling NA NW of Rwy 06-24.



MISSED APPROACH: Climb to 800 then climbing right turn to 3000 intercept HST R-180 to JOMIN and hold as published.

ATIS ★ 132.275 269.9	HOMESTEAD APP CON 123.8 257.675	HOMESTEAD TOWER 133.45 279.55	GND CON 121.75 275.8	CLNC DEL 121.75 275.8
-------------------------	------------------------------------	----------------------------------	-------------------------	--------------------------

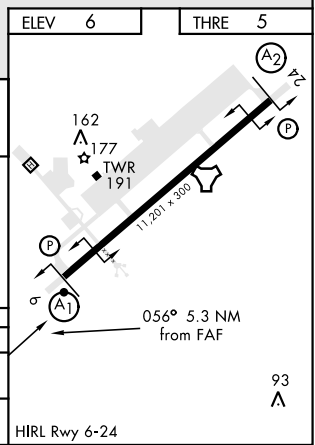
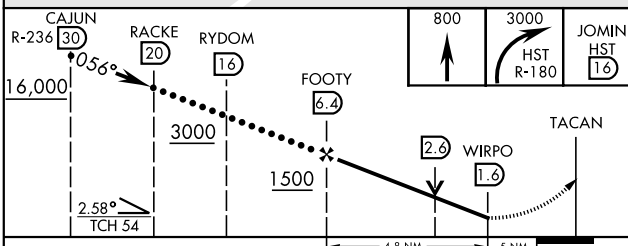
CAUTION: Heliport and stadium 2.2 NM final Rwy 6 at Homestead ARB (stadium may be lit after dark).



SE-3, 15 AUG 2019 to 12 SEP 2019

SE-3, 15 AUG 2019 to 12 SEP 2019

EMERG SAFE ALT 100 NM 15,100



CATEGORY	C	D	E
S-TAC 6 *	460/45	455 (500-7½)	
** CIRCLING	520-1½ 514 (600-1½)	580-2 574 (600-2)	780-2¾ 774 (800-2¾)

HI-TACAN Y RWY 6