

HOMESTEAD, FLORIDA

ILS or LOC Z RWY 6

LOC I-HST 109.9	APCH CRS 055°	Rwy Idg 11,201 THRE Arpt Elev 5 6
---------------------------	-------------------------	--

AL-494 [USAF]

HOMESTEAD ARB (KHST)

▼ * When ALS inop, increase all CATs RVR to 40, vis to ¾ mile.
 ** When ALS inop, increase CAT CDE vis to 1½ miles.
 *** Circling NA NW of Rwy 06-24.

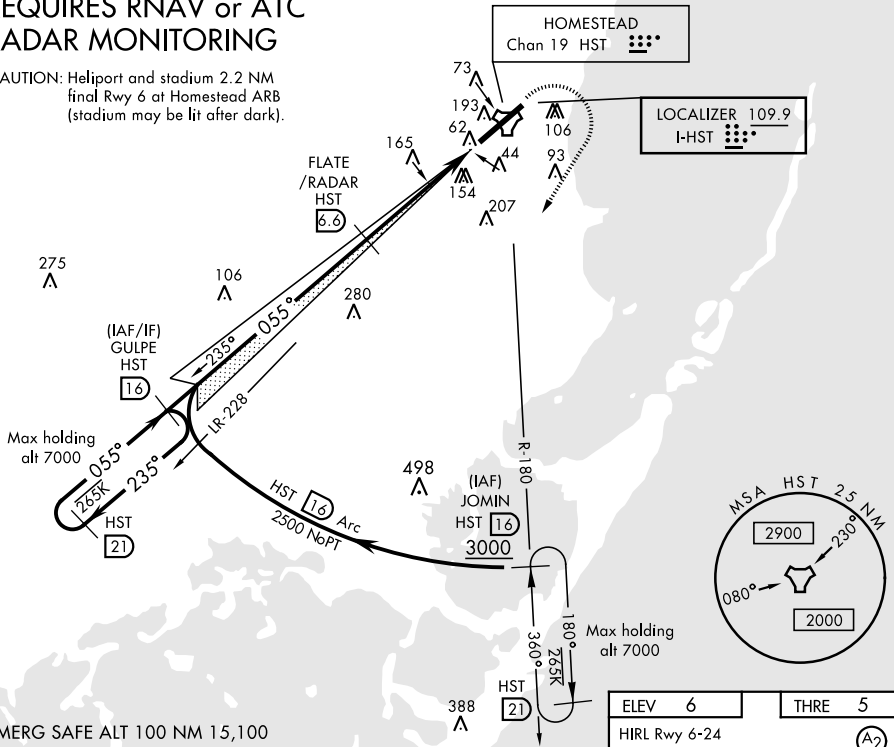


MISSED APPROACH: Climb to 800 then climbing right turn to 3000 intercept HST TACAN R-180 to JOMIN and hold as published.

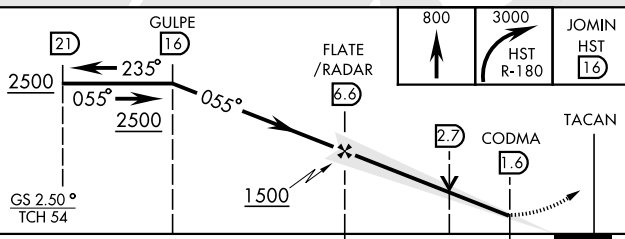
ATIS ★ 132.275 269.9	HOMESTEAD APP CON 123.8 257.675	HOMESTEAD TOWER 133.45 279.55	GND CON 121.75 275.8	CLNC DEL 121.75 275.8
--------------------------------	---	---	--------------------------------	---------------------------------

CIVIL AIRCRAFT: MISSED APPROACH REQUIRES RNAV or ATC RADAR MONITORING

CAUTION: Heliport and stadium 2.2 NM
 final Rwy 6 at Homestead ARB
 (stadium may be lit after dark).



EMERG SAFE ALT 100 NM 15,100



ELEV 6	THRE 5
HIRL Rwy 6-24	
FAF to MAP 5 NM	
Knots	60 90 120 150 180
Min:Sec	5:00 3:20 2:30 2:00 1:40

CATEGORY	A	B	C	D	E
S-ILS 6 *	205/24		200	(200-½)	
S-LOC 6 **	460/24	455 (500-½)	460/45	455 (500-¾)	
*** CIRCLING	460-1 454 (500-1)	500-1 494 (500-1)	520-1½ 514 (600-1½)	580-2 574 (600-2)	780-2¾ 774 (800-2¾)

HOMESTEAD, FLORIDA
 Amdt 1 08NOV18

25°29'N-80°23'W

HOMESTEAD ARB (KHST)

ILS or LOC Z RWY 6

SE-3, 15 AUG 2019 to 12 SEP 2019

SE-3, 15 AUG 2019 to 12 SEP 2019