

HOMESTEAD, FLORIDA

RNAV (GPS) RWY 6

APCH CRS	Rwy Idg	11,201
055°	TDZE	5
	Arprt Elev	6

AL-494 (USAF)

HOMESTEAD ARB (KHST)

V * When ALS inop increase CAT AB RVR to 55, vis to 1 mile, CAT CDE vis to 1 3/8 miles.
 ** Circling NA NW of Rwy 06-24.

ALSF-1

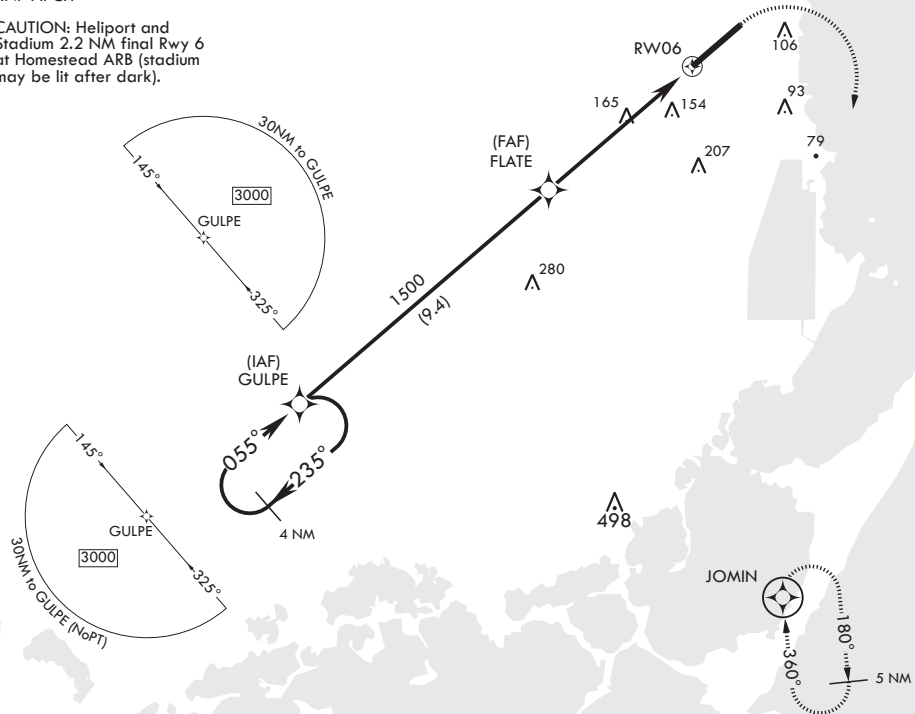
MISSED APPROACH: Climb to 800 then climbing right turn to 3000 direct JOMIN and hold.



ATIS*	APP CON/DEP CON	TOWER	GND CON	CLNC DEL
132.275 269.9	123.8 257.675	133.45 279.55	121.75 275.8	121.75 275.8

DME/DME RNP -0.3 NA
 RNP APCH

CAUTION: Heliport and Stadium 2.2 NM final Rwy 6 at Homestead ARB (stadium may be lit after dark).



EMERG SAFE ALT 100 NM 15,100

<p>3000</p> <p>← 235°</p> <p>055° →</p>		<p>1500</p> <p>055°</p>	<p>1.5 NM to RWY 06</p>	<p>5.4 NM</p>	<p>800</p> <p>3000</p> <p>JOMIN</p> <p>ELEV 6</p> <p>TDZE 5</p>	<p>TWR 191</p> <p>11,201 × 300</p> <p>055° to RWY 06</p> <p>HIRL Rwy 6-24</p>
CATEGORY	A	B	C	D	E	
LNAV MDA*	460/24	455 (500-½)	460/45	455	(500-7/8)	
CIRCLING**	460-1 454 (500-1)	500-1 494 (500-1)	520-1½ 514 (600-1½)	580-2 574 (600-2)	780-2¾ 774 (800-2¾)	

HOMESTEAD, FLORIDA

25°29'N - 80°23'W

HOMESTEAD ARB (KHST)

Amdt 1 31JAN19
 TERPS

RNAV (GPS) RWY 6

SE-3, 15 AUG 2019 to 12 SEP 2019

SE-3, 15 AUG 2019 to 12 SEP 2019