

HOMESTEAD, FLORIDA

# TACAN RWY 24

TACAN HST Chan 19	APCH CRS 234°	Rwy ldg 11,201 TDZE 5 Arprt Elev 6
----------------------	------------------	--

AL-494 [USAF]

HOMESTEAD ARB (KHST)

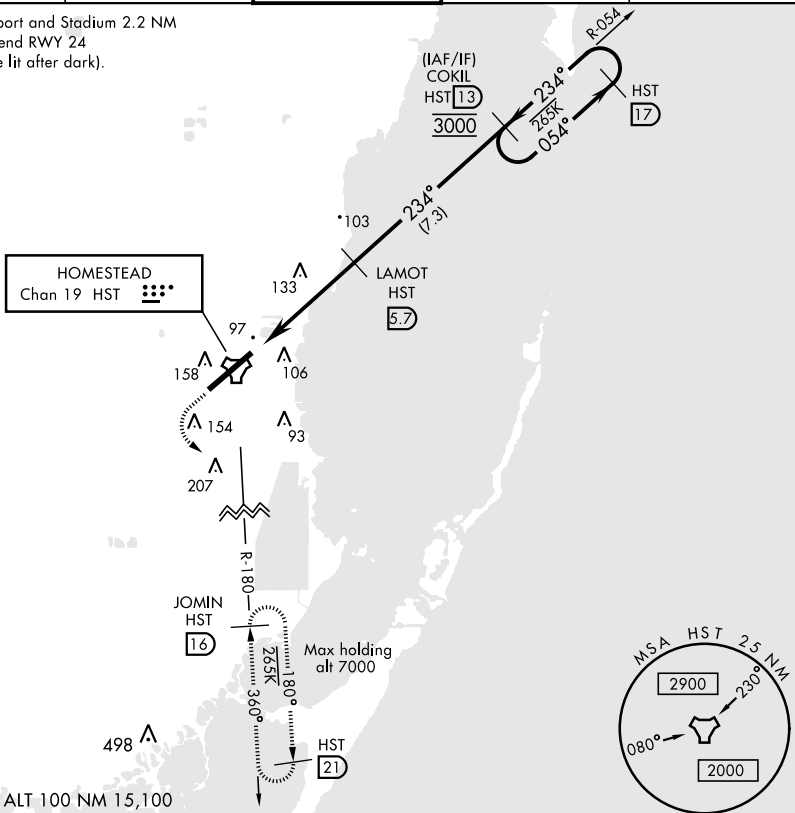
▼ \* When ALS inop increase CAT AB RVR to 55, vis to 1 mile; CAT CDE RVR to 60, vis to 1½ miles.  
 \*\* Circling NA NW of Rwy 24-06.



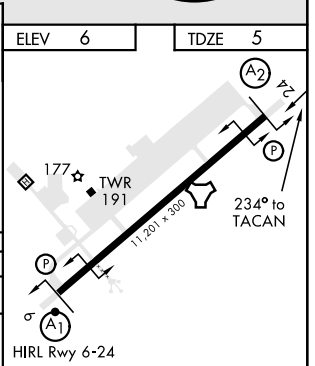
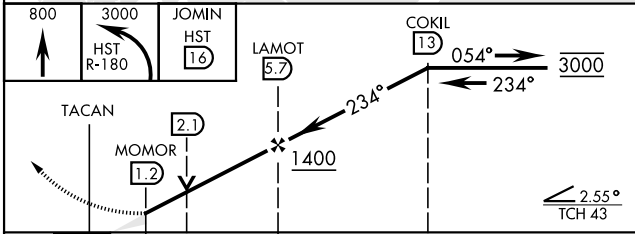
MISSED APPROACH: Climb to 800 then climbing left turn to 3000 intercept HST TACAN R-180 to JOMIN and hold as published.

ATIS ★ 132.275 269.9	HOMESTEAD APP CON 123.8 257.675	HOMESTEAD TOWER 133.45 279.55	GND CON 121.75 275.8	CLNC DEL 121.75 275.8
-------------------------	------------------------------------	----------------------------------	-------------------------	--------------------------

CAUTION: Heliport and Stadium 2.2 NM from departure end RWY 24 (stadium may be lit after dark).



EMERG SAFE ALT 100 NM 15,100



	ELEV 6	TDZE 5			
CATEGORY	A	B	C	D	E
S-24 *	420/40	415 (500-¾)	420/50	415 (500-1)	
** CIRCLING	440-1 434 (500-1)	500-1 494 (500-1)	520-1½ 514 (600-1½)	580-2 574 (600-2)	780-2¾ 774 (800-2¾)

HOMESTEAD, FLORIDA  
Amdt 1 08NOV18

25°29'N-80°23'W

HOMESTEAD ARB (KHST)

# TACAN RWY 24

SE-3, 15 AUG 2019 to 12 SEP 2019

SE-3, 15 AUG 2019 to 12 SEP 2019